

Sonus faber

C O L L E C T I O N S

Sf16

Aida

Lilium

Il Cremonese

Homage
tradition

Sonus faber
Olympica
collection

Venere
collection

Chameleon
collection

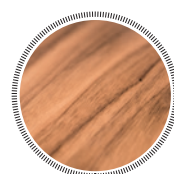
Principia
collection

Sonus faber



Emotion. Connection. Desire.

AVAILABLE FINISHES



WALNUT

Sf16

Aida

Lilium

Il Cremonese

Homage
tradition

Sonus faber
Olympica
collection

Venere
collection

Chameleon
collection

Principia
collection

Sonus faber



Sf16

Aida

Lilium

Il Cremonese

Homage
tradition

Sonus faber
Olympica
collection

Venere
collection

Chameleon
collection

Principia
collection

Sonus faber



Sf16

Aida

Lilium

Il Cremonese

Homage
tradition

Sonus faber
Olympica
collection



Venere
collection



Chameleon
collection

Principia
collection

Sonus faber



Sf16

Aida

Lilium

Il Cremonese

Homage
tradition

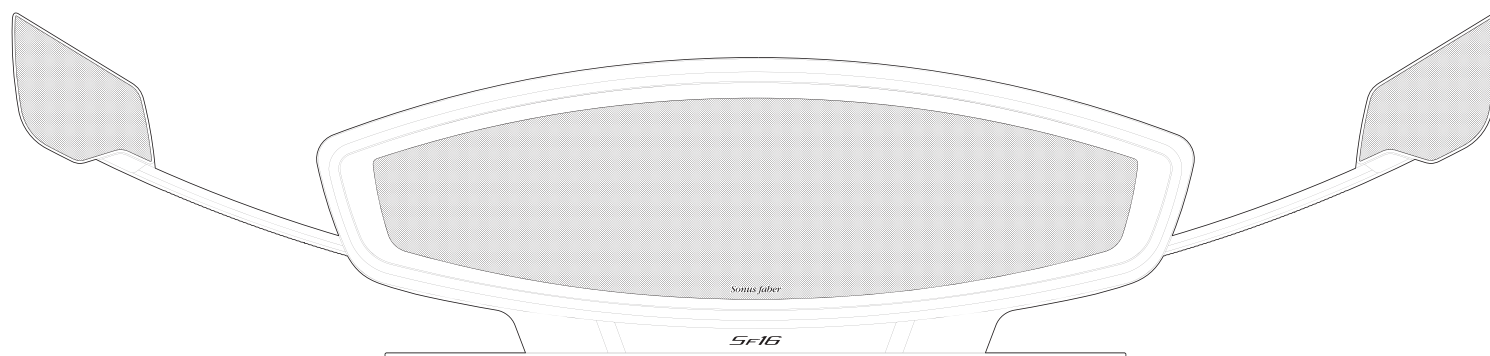
Sonus faber
Olympica
collection

Venere
collection

Chameleon
collection

Principia
collection

Sonus faber



Sf16

Aida

Lilium

Il Cremonese

Homage
tradition

Sonus faber
Olympica
collection

Venere
collection

Chameleon
collection

Principia
collection

Sonus faber

TECHNICAL SPECIFICATIONS

AUDIO INPUTS

- 1x AUX (analog RCA)
- 1x Digital S/pdif coaxial
- 1x Digital Toslink optical
- 1x Play-Fi Wireless standards 802.11a/b/g/n protocol

FILE FORMATS

MP3, AAC, FLAC, WAV

FILE QUALITY

Lossless file reproduction up to 16-bit/44.1kHz (CD Quality) and full compatibility with all high-resolution music up to 24bit/192k.

Plays all format bitrates [kbps].

DTS Play-Fi transmits hi-resolution files but it does a down-sample in order to distribute them throughout your home.

SUPPORTED INTERNET MUSIC SERVICES

Deezer, KKbox, Rhapsody, Songza, Tidal, Spotify®, Amazon music, iHearthradio, Pandora, Sirius XM, internet radios.

SUPPORTED MEDIA SERVER

DLNA

CONNECTIVITY

Remote control

Wi-Fi (802.11b/g)

LOUDSPEAKER SYSTEM

3 ways, Sound Field Shaper technology, Bipole/
Dipole radiation for enhanced stereo width

DRIVERS

2x 5" long throw subwoofers, push-push structure,
"Zero Vibration Technology" 2 satellite Front/Back
with 4x ceramic 2" Midrange + 4x 5/8" tweeter
point source silk dome

AMPLIFICATION

1400 W total, 4 Ω

DIMENSIONS (HxWxD)

Closed: 230 x 640 x 415 mm

Open: 262 x 1080 x 415 mm

WEIGHT

25 Kg

A.C. MAINS VOLTAGE

100 - 240 V, 50/60 Hz

POWER CONSUMPTION

Typical use 340W

Stand-by: <0,5W

Sf16

Aida

Lilium

Il Cremonese

Homage
tradition

Sonus faber
Olympica
collection

Venere
collection

Chameleon
collection

Principia
collection

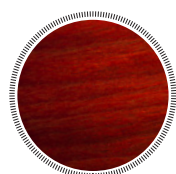
Sonus faber

Sonus faber

Aida

ART OF A NEW ERA

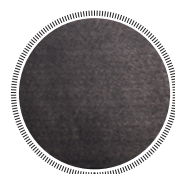
AVAILABLE FINISHES



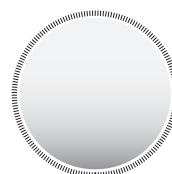
RED



WALNUT



GRAPHITE



WHITE

Sf16

Aida

Lilium

Il Cremonese

Homage
tradition

Sonus faber
Olympica
collection

Venere
collection

Chameleon
collection

Principia
collection

Sonus faber



Sf16

Aida

Lilium

Il Cremonese

Homage
tradition

Sonus faber
Olympica
collection

Venere
collection

Chameleon
collection

Principia
collection

Sonus faber



Sf16

Aida

Lilium

Il Cremonese

Homage
tradition

Sonus faber
Olympica
collection

Venere
collection

Chameleon
collection

Principia
collection

Sonus faber



Sf16

Aida

Lilium

Il Cremonese

Homage
tradition

Sonus faber
Olympica
collection

Venere
collection

Chameleon
collection

Principia
collection

Sonus faber



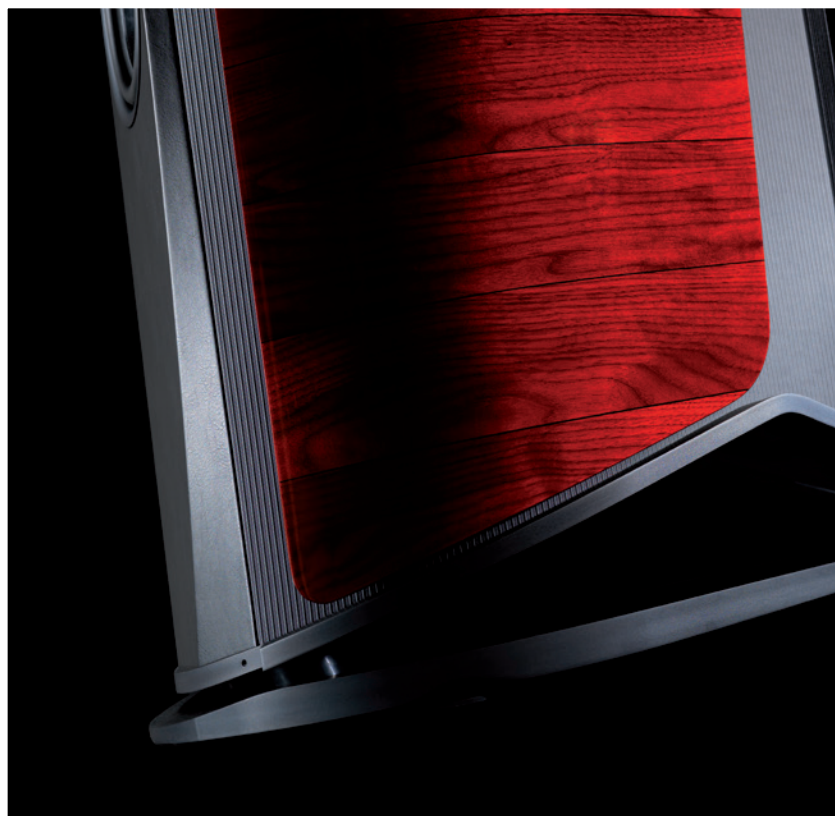
Sf16

Aida

Lilium

Il Cremonese

Homage
tradition



Sonus faber
Olympica
collection

Venere
collection

Chameleon
collection

Principia
collection

Sonus faber



Sf16

Aida

Lilium

Il Cremonese

Homage
tradition

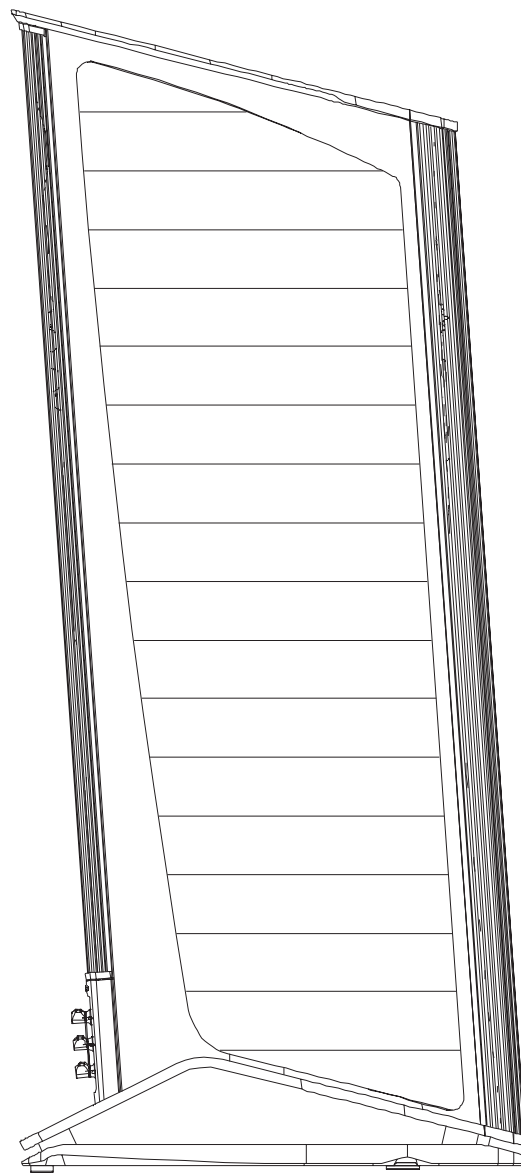
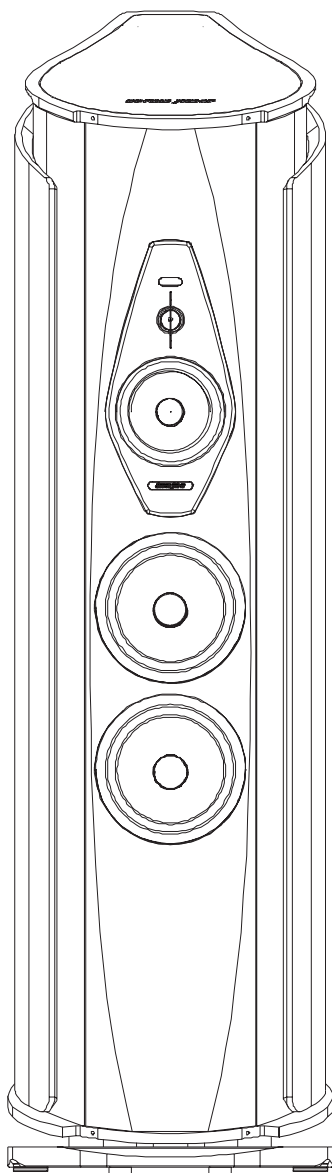
Sonus faber
Olympica
collection

Venere
collection

Chameleon
collection

Principia
collection

Sonus faber



Sf16

Aida

Lilium

Il Cremonese

Homage
tradition

Sonus faber
Olympica
collection

Venere
collection

Chameleon
collection

Principia
collection

Sonus faber

TECHNICAL SPECIFICATIONS

SYSTEM

3.5 way, Sound field Shaper Technology, "Zero Vibration Transmission" technology, para-aperiodic vented box "Stealth Reflex System", staggered low frequency floorstanding loudspeaker system.

CABINET

"Lyra shape" design, dual side curvature, special cross grained okoumé plywood, used in a double thickness constriction layer damped configuration. Sub-structural ribs are strategically placed for total rejection of spurious vibrations and standing waves control. Two "dampshelves" (from the "the Sonus faber" experience), i.e. CNC anodized machined avional "vibration dampers" (on the top and on the bottom of the cabinet) "stiffen" the column structure reducing consistently structural micro-vibrations coming from the cabinet walls and the transducers. The "Anima legata" system is used in an innovative way, encompassing the 3 inner chambers of the front firing drive units. A special steel rod, a high speed mechanical interface, concentrates the remaining micro-vibrations conveying them to the dual multiple "Tuned Mass Dampers", i.e. two differently tuned special custom devices optimized to erase micro-vibrations, by oscillating in anti-phase. A totally new floating bridge "Bow spring" suspension for vibrational interface has been devised to decouple the enclosure from the floor through the Zero Vibration Transmission technology, a patent pending suspension system, eliminating any acoustic feedback and any vibration propagation to the listening room.

TWEETER

Sonus faber "Arrow Point" DAD (Damped Apex Dome, synthesis of the classic dome and ring transducer) 29 XTR-06. A Sonus faber designed 29 mm moving coil driver, with Sonus faber's vibration optimized mechanical interface. The ultra dynamic linearity is given by the new Neodymium motor system. Implemented with a natural wood acoustic labyrinth rear chamber, a mechanical anti-resonator designed for this application. To perfectly match the high frequency performance to different listening rooms and different tastes it is possible to adjust the SPL of the tweeter.

MIDRANGE

Sonus faber M18 XTR-08. A Sonus faber designed 180 mm neodymium magnet system ultra dynamic linearity midrange. CCAW wire is used on a composite former "eddy current free" voice coil. The dynamically linear magnetic field motor incorporates triple Kellogg/Goeller rings. A special custom diaphragm is made with a real time air dried non pressed blend of traditional cellulose pulp, kapok, kenaf and other natural fibers, developed according to the most natural sound. To further inhibit any residual cone coloration we are using a transparent viscous surface damping coating. The basket is thoroughly optimized to eliminate any resonance, thanks to a high-tech dual metal (Avional and Gun Metal), CNC machined from solid billets. The combination of the two different materials, Avional and Gunmetal, allows eliminating any mutual resonance. The same way as the tweeter, the midrange is decoupled from the main baffle board and designed synergistically with its optimized "acoustic chamber". A special coaxial anti-compressor is used, designed to remove cavity resonances and distortions.

WOOFERS

Sonus faber W22 XTR-12. A pair of Sonus faber designed 220 mm lightweight "sandwich" cone structure (high-tech syntactic foam core and two external surface skins of coated cellulose pulp) woofers are embedded in an acoustically amorphous "stealth reflex" chamber. Designed to blend perfectly with the special midrange and, at the same time, to have absolute definition in their range: the sandwich structure with outer paper pulp skins has the same sonic character of the midrange cone. A long-throw motor system with a 2" controlled "eddy current" voice coil is implemented for high speed, performance and linearity. Special coaxials anti-compressor are used, designed to remove cavity resonance and distortions.

INFRA WOOFER

Sonus faber SW32 XT-08. Sonus faber designed a 320 mm infra woofer, lightweight honeycomb composite sandwich cone structure with Nanocarbon technology for a maximum rigidity and implemented it in an acoustically amorphous "stealth reflex" chamber. The unit features a very powerful long throw motor with a 3" voice coil for

ultra dynamic linearity. To perfectly match the low-end performance to different listening rooms it is possible to adapt the SPL of the infra woofer.

SOUND FIELD SHAPER

The special patented Sound field Shaper technology, a direct derivation from the "the Sonus faber", allows the control of the direct/reverberant radiation ratio of the Aida. The sound field shaping module can be SPL optimized.

SOUND FIELD SHAPER TWEETER

29 mm ultra dynamic linearity neodymium dome driver. Optimized off-axis radiation for this special application.

SOUND FIELD SHAPER MIDRANGE

120 mm, paper pulp/natural fiber blend cone driver for maximum coherence with the front midrange emission.

CROSSOVER

Non-resonant design, optimized amplitude/phase response for optimal space/time performance. "Paracross topology" on the tweeter hi-pass. The impedance at low frequencies is controlled for a clear and friendly amplifier performance. Triple staggered transfer function low frequency/room interface optimized filter. Highest quality is used in terms of the components: Mundorf "Supreme" Silver/Gold/Oil capacitors, Jantzen inductors. Cross-over: 55Hz - 180 Hz - 250 Hz - 3000Hz.

FREQUENCY RESPONSE

20 Hz – 35.000 Hz, Stealth reflex included

SENSITIVITY

92 db SPL (2.83V/1 m)

NOMINAL IMPEDANCE

4 ohm

POWER HANDLING

100W – 1KW, without clipping

DIMENSIONS (HxWxD)

1725mm x 482mm x 780mm

WEIGHT

330 Kg per pair

Sf16

Aida

Lilium

Il Cremonese

Homage
tradition

Sonus faber
Olympica
collection

Venere
collection

Chameleon
collection

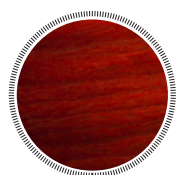
Principia
collection

Sonus faber

Sonus faber



AVAILABLE FINISHES



RED



WALNUT

SPECIAL FINISHES AVAILABLE
ON DEMAND



GOLD



METAL BLACK



WHITE WALNUT

Sf16

Aida

Lilium

Il Cremonese

Homage
tradition

Sonus faber
Olympica
collection

Venere
collection

Chameleon
collection

Principia
collection

Sonus faber



Sf16

Aida

Lilium

Il Cremonese

Homage
tradition

Sonus faber
Olympica
collection

Venere
collection

Chameleon
collection

Principia
collection

Sonus faber



Sf16

Aida

Lilium

Il Cremonese

Homage
tradition

Sonus faber
Olympica
collection

Venere
collection

Chameleon
collection

Principia
collection

Sonus faber



Sf16

Aida

Lilium

Il Cremonese

Homage
tradition

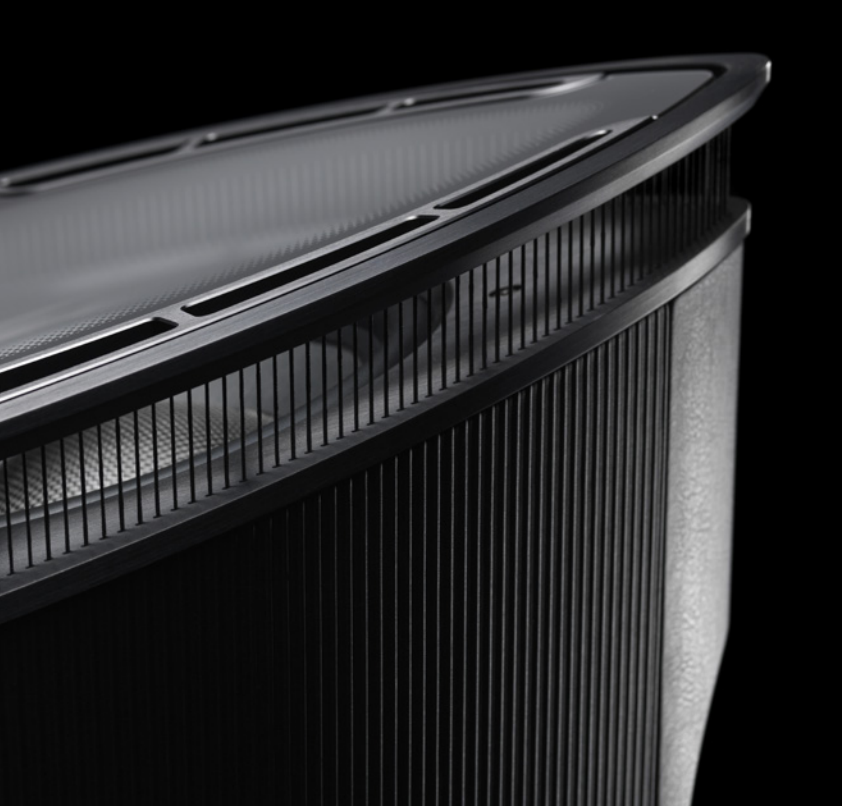
Sonus faber
Olympica
collection

Venere
collection

Chameleon
collection

Principia
collection

Sonus faber



Sf16

Aida

Lilium

Il Cremonese

Homage
tradition

Sonus faber
Olympica
collection

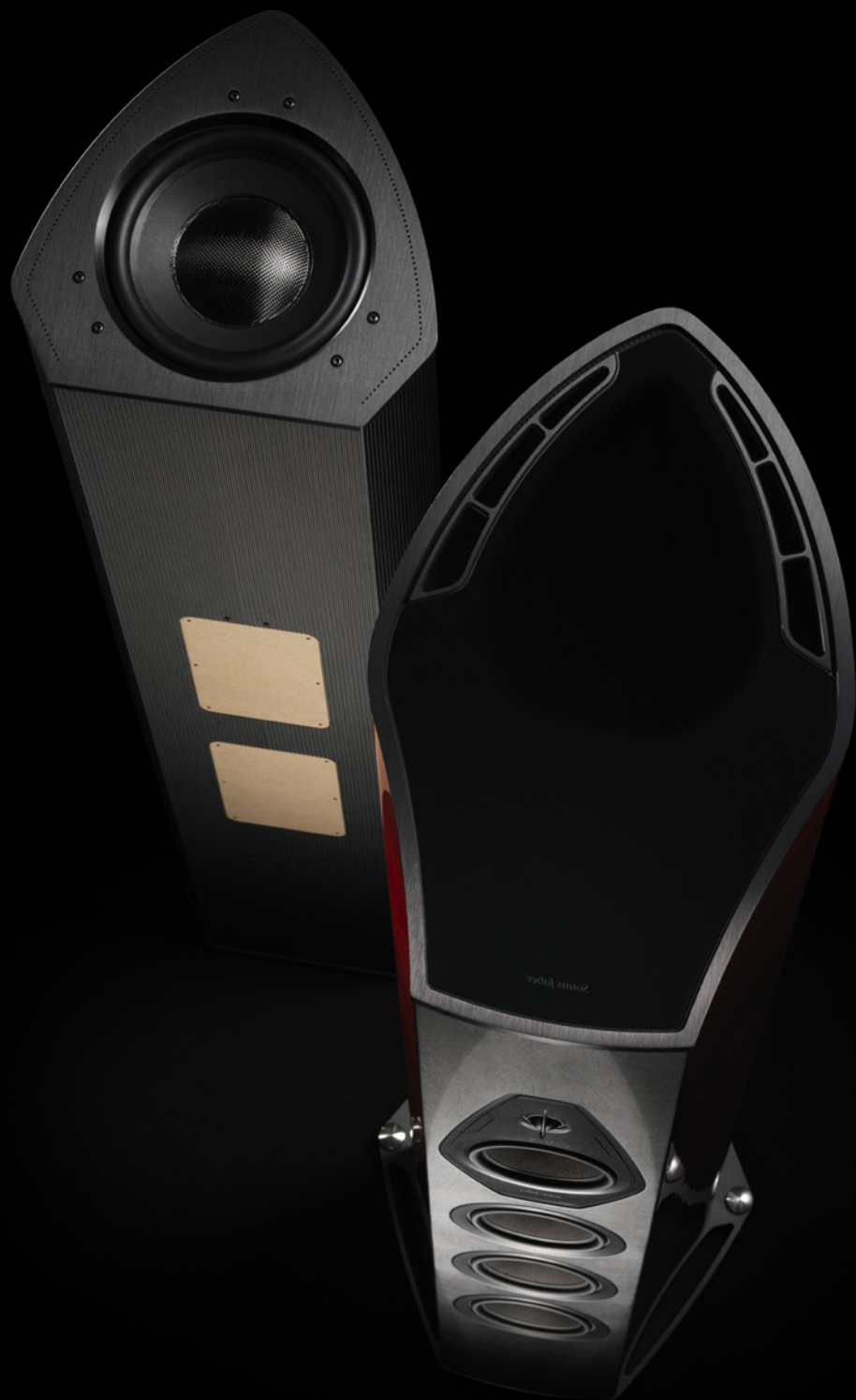
Venere
collection

Chameleon
collection

Principia
collection

Sonus faber





Sf16

Aida

Lilium

Il Cremonese

Homage
tradition

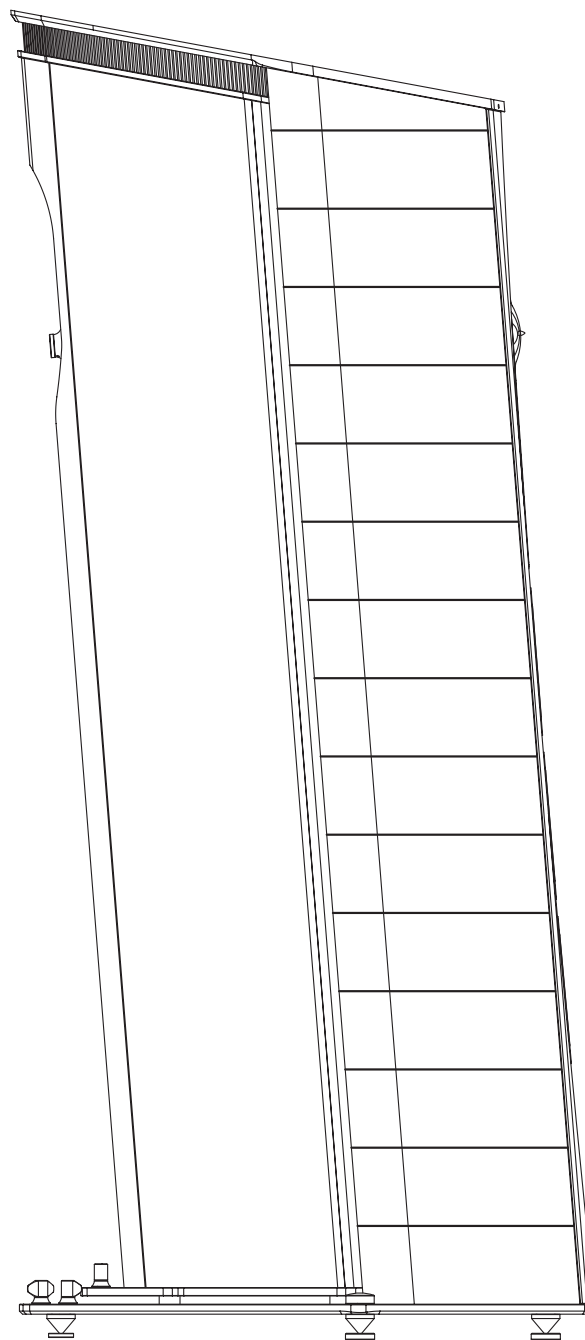
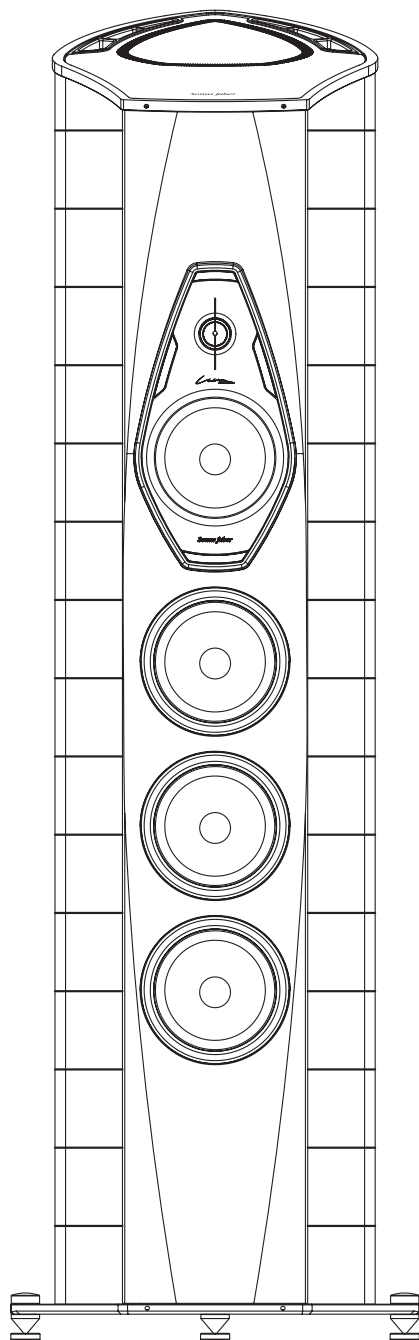
Sonus faber
Olympica
collection

Venere
collection

Chameleon
collection

Principia
collection

Sonus faber



Sf16

Aida

Lilium

Il Cremonese

Homage
tradition

Sonus faber
Olympica
collection

Venere
collection

Chameleon
collection

Principia
collection

Sonus faber

TECHNICAL SPECIFICATIONS

SYSTEM

3.5 way, orthogonal non interactive dual enclosure, para-aperiodic vented box "Stealth Reflex System" on the main enclosure, passive radiator tuned and "Zero Vibration Transmission" technology on the subwoofer enclosure, modulation-free 90° and decoupled from the main one, staggered low frequency floorstanding loudspeaker system.

CABINET

"Lyra shape" design, progressive thickness triple curvature cabinet walls damped spread resonance spectrum system, Sub-structural ribs are strategically placed for total rejection of spurious vibrations and standing waves control. Two double "dampshelves" (from "The" experience), i.e. CNC anodized machined avional "vibration dampers" (on the top and on the bottom of each cabinet) "stiffen" the column structures reducing consistently structural micro-vibrations coming from the cabinets' walls and the transducers. The "Anima legata" system is used in an innovative way, encompassing the structural ribs of the subwoofer enclosure. A special steel rod, a high speed mechanical interface, concentrates the remaining micro-vibrations conveying them to the dual multiple "Tuned Mass Dampers", i.e. two differently tuned special custom devices optimized to erase micro-vibrations, by oscillating in anti-phase. The subwoofer enclosure has been decoupled from the main enclosure through a new implementation of the Zero Vibration Transmission technology, a suspension system, eliminating any acoustic feedback and any vibration propagation to the listening room. The radiation of the main enclosure and of the subwoofer one are orthogonal to avoid any intermodulation.

TWEETER

Sonus faber "Arrow Point" DAD (Damped Apex Dome, synthesis of the classic dome and ring transducer) H28 XTR-04. A Sonus faber designed 28 mm moving coil driver, with Sonus faber's vibration optimized mechanical interface. The ultra dynamic linearity is given by the new Neodymium motor system. Implemented with a natural wood acoustic labyrinth rear chamber, a mechanical anti-resonator designed for this application.

MIDRANGE

Sonus faber M18 XTR-04. A Sonus faber designed 180 mm neodymium magnet system ultra dynamic linearity midrange. CCAW wire is used on a composite former "eddy current free" voice coil. The dynamically linear magnetic field motor incorporates triple Kellogg/Goeller rings. A special custom diaphragm is made with a real time air dried non pressed blend of traditional cellulose pulp, kapok, kenaf and other natural fibers, developed according to the most natural sound. To further inhibit any residual cone coloration we are using a transparent viscous surface damping coating. The same way as the tweeter, the midrange is decoupled from the main baffle board and designed synergistically with its optimized "acoustic chamber". A special coaxial anti-compressor is used, designed to remove cavity resonances and distortions.

WOOFERS

Sonus faber W18XTR-16. A triple of Sonus faber designed 180 mm lightweight "sandwich" cone structure (high-tech syntactic foam core and two external surface skins of cellulose pulp) woofers are integrated in an acoustically amorphous "stealth reflex" chamber. Designed to blend perfectly with the special midrange and, at the same time, to have absolute definition in their range: the sandwich structure with outer paper pulp skins has the same sonic character of the midrange cone. A powerful long stroke motor system with a 1,5" controlled "eddy current" voice coil is implemented for high speed, performance and linearity.

INFRA WOOFER

Sonus faber SW26 XT-08. Sonus faber designed a 260 mm infra woofer, lightweight hard paper composite sandwich cone technology for a maximum rigidity and implemented it in an acoustically amorphous passive radiator tuned separated enclosure. The unit features a very powerful long throw motor with a 2.5" voice coil for ultra dynamic linearity. To perfectly match the low-end performance to different listening rooms it is possible to adapt the SPL of the infra woofer.

CROSS-OVER

Non-resonant design, optimized amplitude/phase response for optimal space/time performance. "Paracross topology". The impedance at low frequencies is controlled for a clear and friendly amplifier performance. Double staggered transfer function low frequency/room interface optimized filter. Highest quality is used in terms of the components: Mundorf "Supreme" Silver/Gold/Oil capacitors, Jantzen inductors. Cross-over: 80Hz - 250 Hz - 2500Hz.

FREQUENCY RESPONSE

20 Hz – 35.000 Hz, Stealth reflex included.

SENSITIVITY

92 db SPL (2.83V/1 m).

NOMINAL IMPEDANCE

4 ohm.

SUGGESTED AMPLIFIER POWER OUTPUT

100W – 800W, without clipping.

LONG-TERM MAX INPUT VOLTAGE

(IEC 268-5)

30 V rms

DIMENSIONS

160mm x 491mm x 705mm (HxWxD)

WEIGHT

103 Kg each - net weight

156 kg each - shipping weight

Sf16

Aida

Lilium

Il Cremonese

Homage
tradition

Sonus faber
Olympica
collection

Venere
collection

Chameleon
collection

Principia
collection

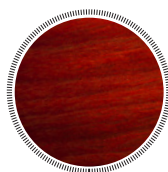
Sonus faber

Sonus faber
IL CREMONESE

Antonio Stradivari

History, **remade.**

AVAILABLE FINISHES



RED



WALNUT

Sf16

Aida

Lilium

Il Cremonese

Homage
tradition

Sonus faber
Olympica
collection

Venere
collection

Chameleon
collection

Principia
collection

Sonus faber



Sf16

Aida

Lilium

Il Cremonese

Homage
tradition

Sonus faber
Olympica
collection

Venere
collection

Chameleon
collection

Principia
collection

Sonus faber



Sf16

Aida

Lilium

Il Cremonese

Homage
tradition

Sonus faber
Olympica
collection

Venere
collection

Chameleon
collection

Principia
collection

Sonus faber



Sf16

Aida

Lilium

Il Cremonese

Homage
tradition

Sonus faber
Olympica
collection

Venere
collection

Chameleon
collection

Principia
collection

Sonus faber





Sf16

Aida

Lilium

Il Cremonese

Homage
tradition

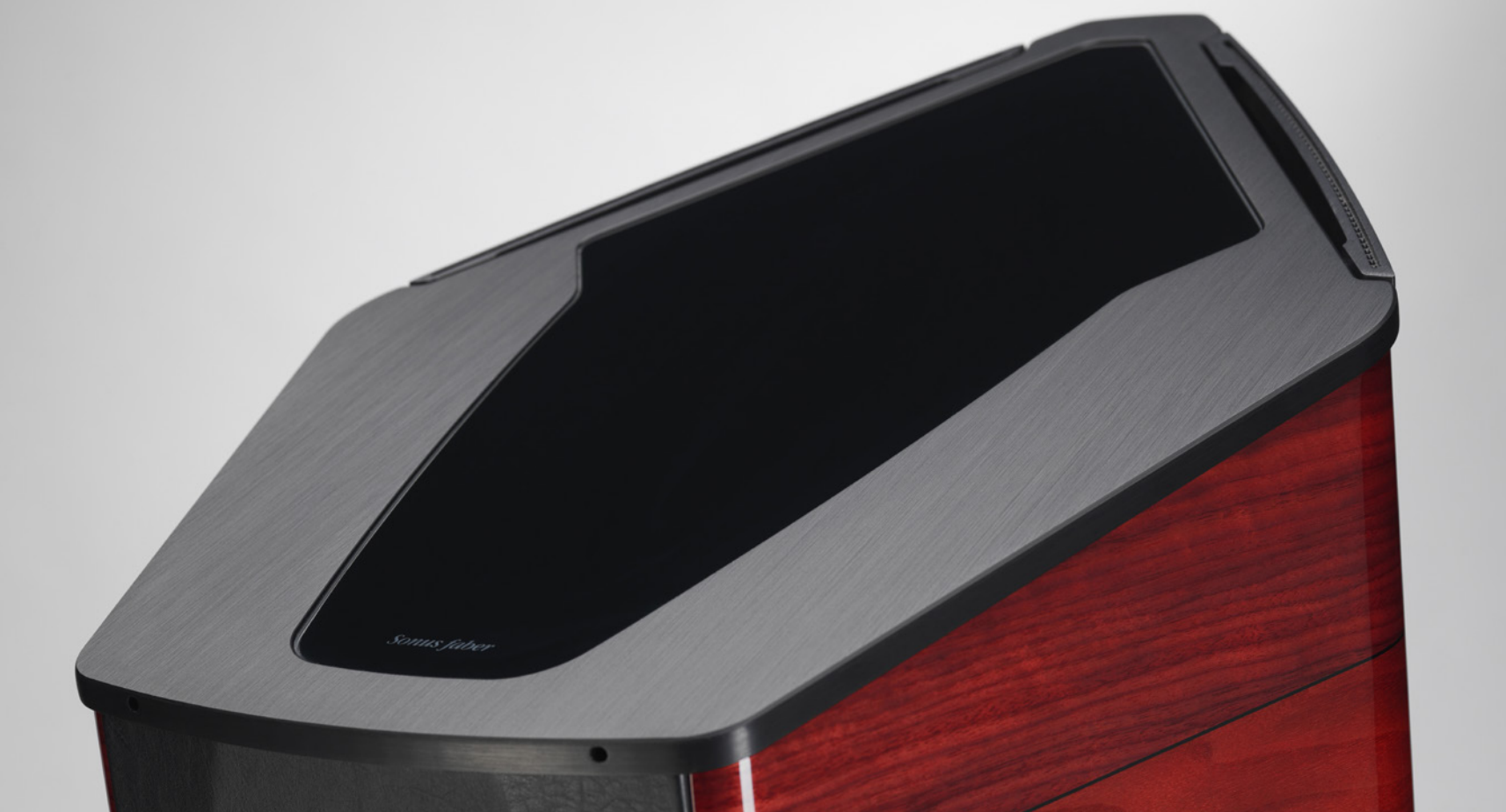
Sonus faber
Olympica
collection

Venere
collection

Chameleon
collection

Principia
collection

Sonus faber



Sf16

Aida

Lilium

Il Cremonese

Homage
tradition

Sonus faber
Olympica
collection



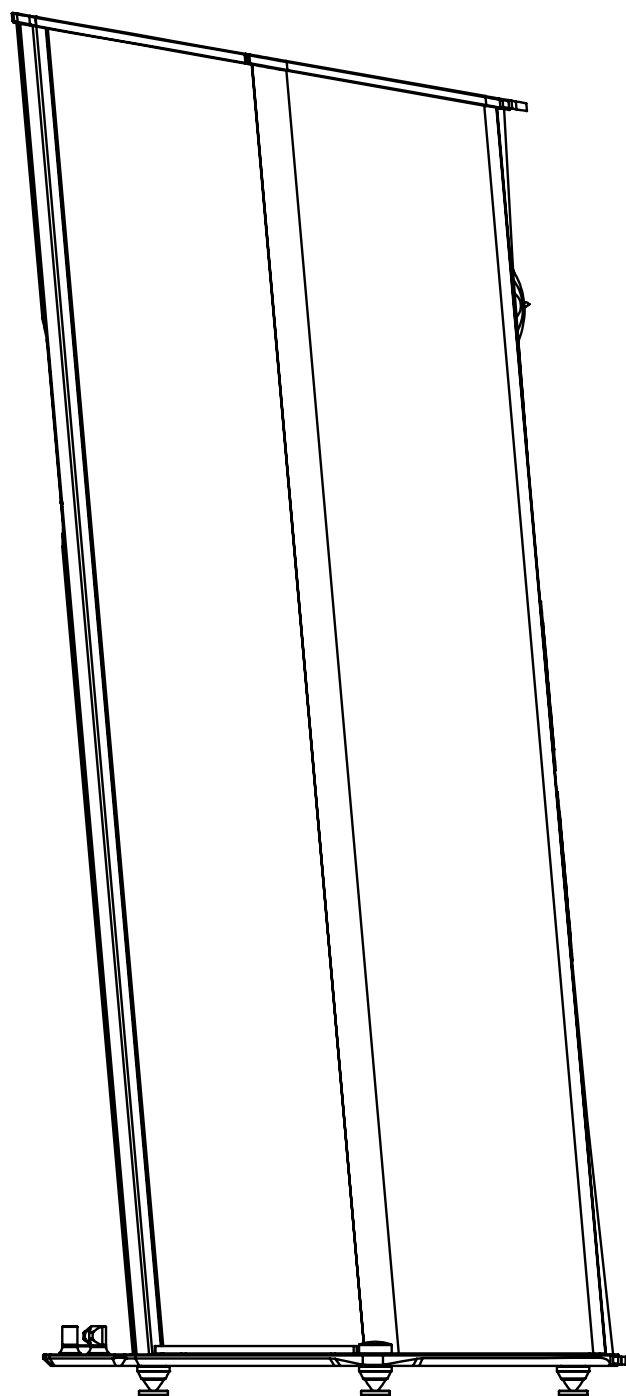
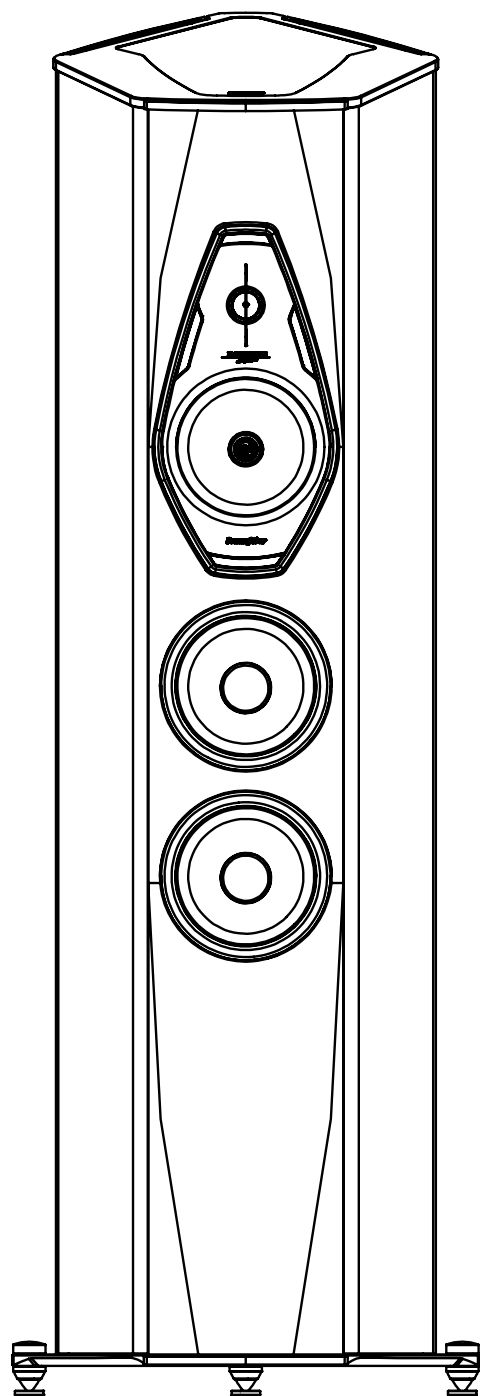
Venere
collection

Chameleon
collection

Principia
collection



Sonus faber



Sf16

Aida

Lilium

Il Cremonese

Homage
tradition

Sonus faber
Olympica
collection

Venere
collection

Chameleon
collection

Principia
collection

Sonus faber

TECHNICAL SPECIFICATIONS

SYSTEM

3.5 way, full para-aperiodic vented box "Stealth Reflex System" .

TWEETER

Sonus faber "Arrow Point" DAD (Damped Apex Dome) H28 XTR-04. A Sonus faber designed 28 mm moving coil driver, with Sonus faber's vibration optimized mechanical interface. The ultra dynamic linearity is given by the new Neodymium motor system. Implemented with a natural wood acoustic labyrinth rear chamber.

MIDRANGE

Sonus faber M18 XTR-04. A Sonus faber designed 180 mm neodymium magnet system ultra dynamic linearity midrange. CCAW wire is used on a composite former "eddy current free" voice coil. The dynamically linear magnetic field motor incorporates triple Kellog/Goeller rings. A special diaphragm is made with a real time air dried non pressed blend of traditional cellulose pulp, kapok, kenaf and other natural fibers with a transparent viscous surface damping coating. The midrange is decoupled from the main baffle board and designed synergistically with its optimized "acoustic chamber".

WOOFER

Sonus faber W18XTR-12. A pair of Sonus faber designed 180 mm lightweight "sandwich" cone structure (high-tech syntactic foam core and two external surface skins of cellulose pulp) woofers are integrated in an acoustically amorphous "stealth reflex" chamber. Designed to blend perfectly with the special midrange and, at the same time, to have absolute definition in their range: the sandwich structure with outer paper pulp skins has the same sonic character of the midrange cone. A powerful long stroke motor system with a 1,5" controlled "eddy current" voice coil is implemented for high speed, performance and linearity.

INFRA WOOFER

Sonus faber W22XTR-16. A pair of Sonus faber designed 220 mm lightweight "sandwich" cone structure infra woofers (the same as the Woofers') are integrated in an acoustically amorphous "stealth reflex" chamber. Designed to blend perfectly with the special woofers and, at the same time, to have absolute definition in their range: in fact using exactly the same cone

sandwich structure with outer paper pulp skins. A powerful extreme linear stroke motor system with a 2" controlled "eddy current" voice coil is implemented for the presence of the lowest.

CROSS-OVER

Non-resonant design, optimized amplitude/phase response for optimal space/time performance. "Paracross topology". The impedance at low frequencies is controlled for a clear and friendly amplifier performance. Double staggered transfer function low frequency/room interface optimized filter.

Highest quality is used in terms of the components: latest generation Mundorf "Evo" Oil and Silver/Gold/Oil capacitors, Jantzen inductors.

Cross-over: 80Hz - 250 Hz - 2500Hz.

FREQUENCY RESPONSE

25 Hz – 35.000 Hz, Stealth reflex included.

SENSITIVITY

92 db SPL (2.83V/1 m).

NOMINAL IMPEDENCE

4 ohm

SUGGESTED AMPLIFIER POWER OUTPUT

100W – 800W, without clipping.

LONG-TERM MAX INPUT VOLTAGE (IEC-268-5)

30V rms

TOTAL DIMENSIONS (HXWXD)

1449.6 mm x 398.23 mm x 621.8 mm
57.07" x 15.68" x 24.5"

WEIGHT

84 Kg / 184.8 lbs each – net weight.

Sf16

Aida

Lilium

Il Cremonese

Homage
tradition

Sonus faber
Olympica
collection

Venere
collection

Chameleon
collection

Principia
collection

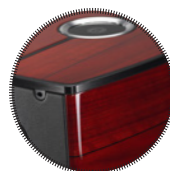
Sonus faber

Sonus faber
HOMAGE

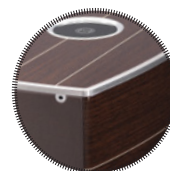
TRADITION

Everyday **Luxury**

AVAILABLE FINISHES



RED



WENGÈ

Sf16

Aida

Lilium

Il Cremonese

Homage
tradition

Guarneri
tradition
Serafino
tradition
Amati
tradition

Sonus faber
Olympica
collection

Venere
collection

Chameleon
collection

Principia
collection

Sonus faber



Sf16

Aida

Lilium

Il Cremonese

Homage
tradition

Sonus faber
Olympica
collection

Venere
collection

Chameleon
collection

Principia
collection

Sonus faber

Guarneri
tradition
Serafino
tradition
Amati
tradition



Sf16

Aida

Lilium

Il Cremonese

Homage
tradition

Guarneri
tradition
Serafino
tradition
Amati
tradition

Sonus faber
Olympica
collection

Venere
collection

Chameleon
collection

Principia
collection

Sonus faber



Sf16

Aida

Lilium

Il Cremonese

Homage
tradition

Guarneri
tradition
Serafino
tradition
Amati
tradition

Sonus faber
Olympica
collection

Venere
collection

Chameleon
collection

Principia
collection

Sonus faber



Sonus faber
GUARNERI

TRADITION
Everyday **Luxury**

Sf16

Aida

Lilium

Il Cremonese

Homage
tradition

Guarneri
tradition
Serafino
tradition
Amati
tradition

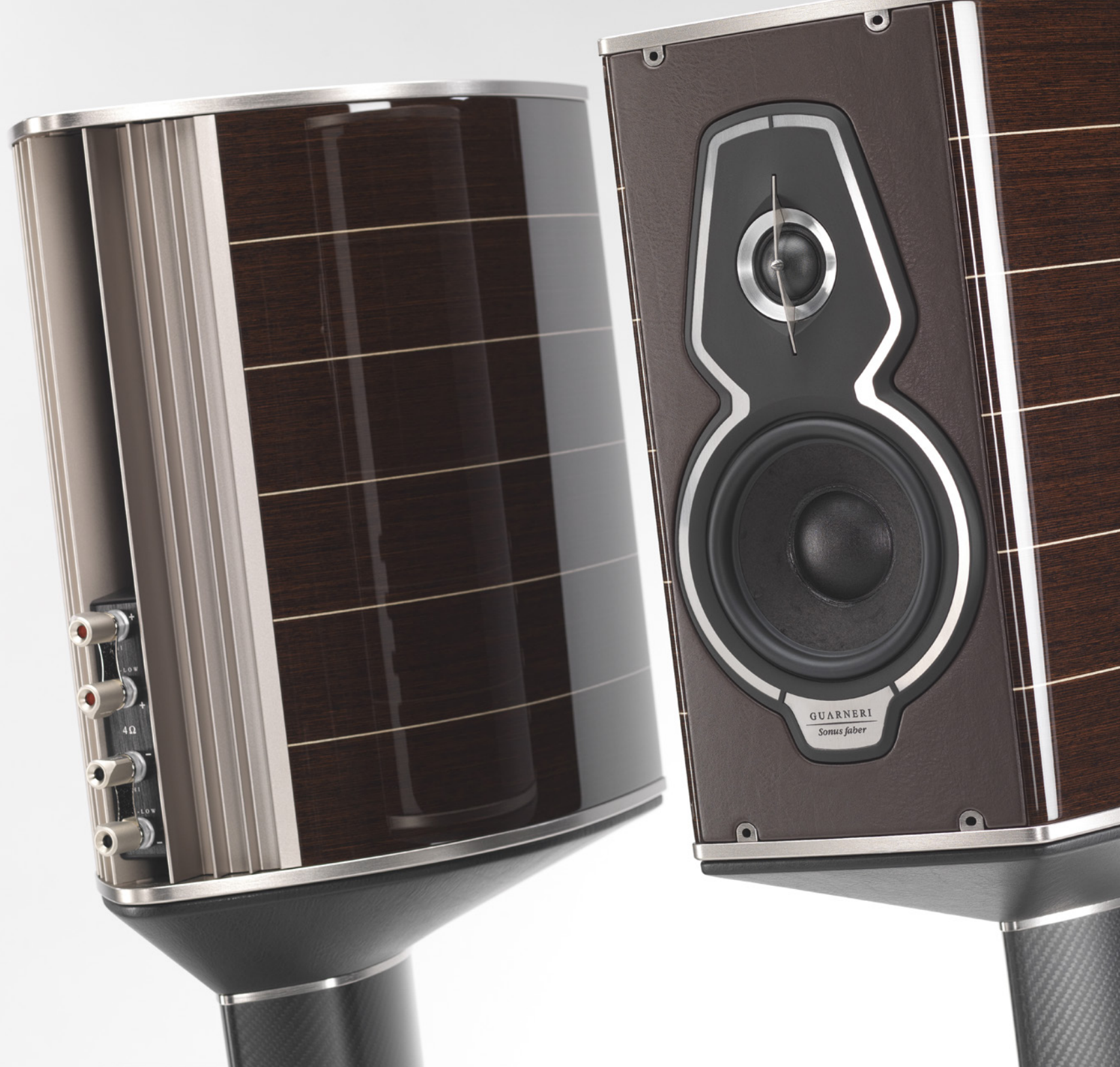
Sonus faber
Olympica
collection

Venere
collection

Chameleon
collection

Principia
collection

Sonus faber



Sf16

Aida

Lilium

Il Cremonese

Homage
tradition

Sonus faber
Olympica
collection

Venere
collection

Chameleon
collection

Principia
collection

Sonus faber

Guarneri
tradition
Serafino
tradition
Amati
tradition



Sf16

Aida

Lilium

Il Cremonese

Homage
tradition

Guarneri
tradition
Serafino
tradition
Amati
tradition

Sonus faber
Olympica
collection

Venere
collection

Chameleon
collection

Principia
collection

Sonus faber



Sf16

Aida

Lilium

Il Cremonese

Homage
tradition

Guarneri
tradition
Serafino
tradition
Amati
tradition

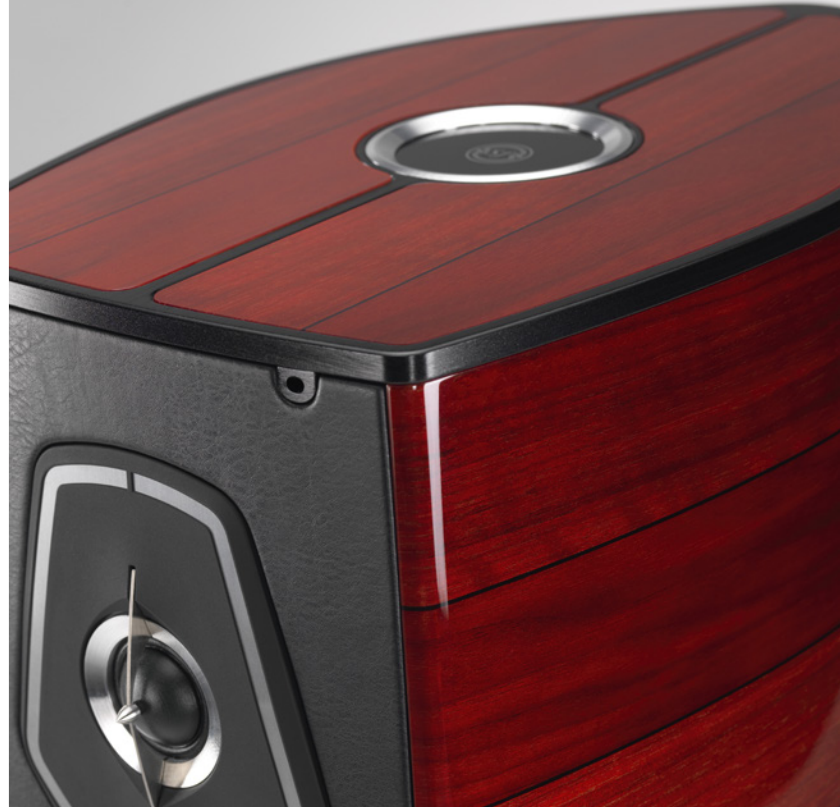
Sonus faber
Olympica
collection

Venere
collection

Chameleon
collection

Principia
collection

Sonus faber



Sf16

Aida

Lilium

Il Cremonese

Homage
tradition

Guarneri
tradition
Serafino
tradition
Amati
tradition

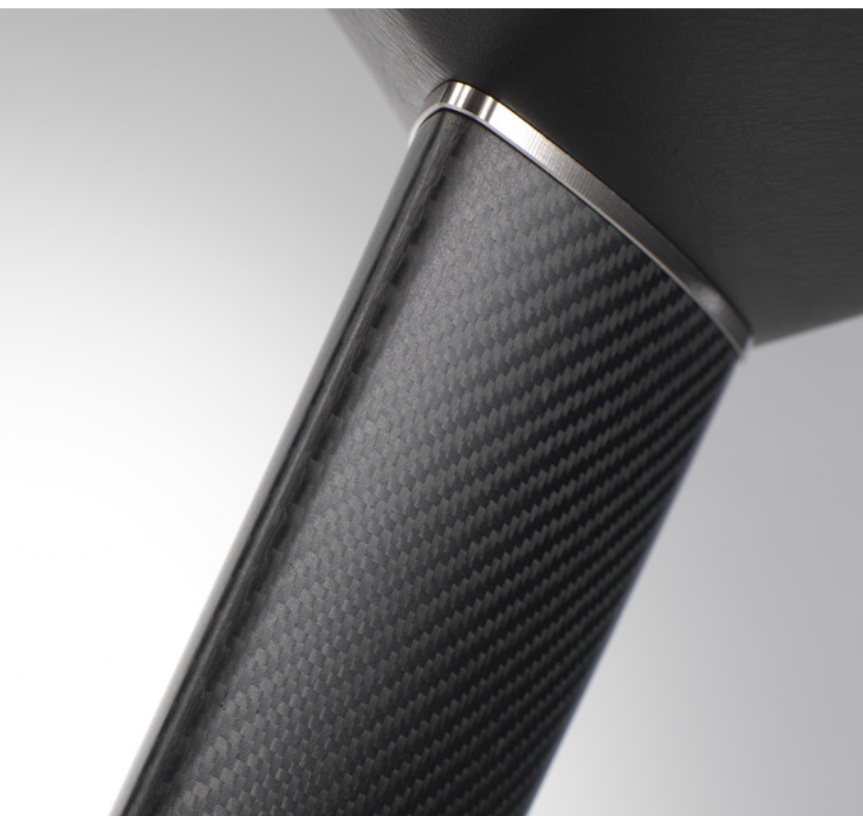
Sonus faber
Olympica
collection

Venere
collection

Chameleon
collection

Principia
collection

Sonus faber





Sf16

Aida

Lilium

Il Cremonese

Homage
tradition

Sonus faber
Olympica
collection

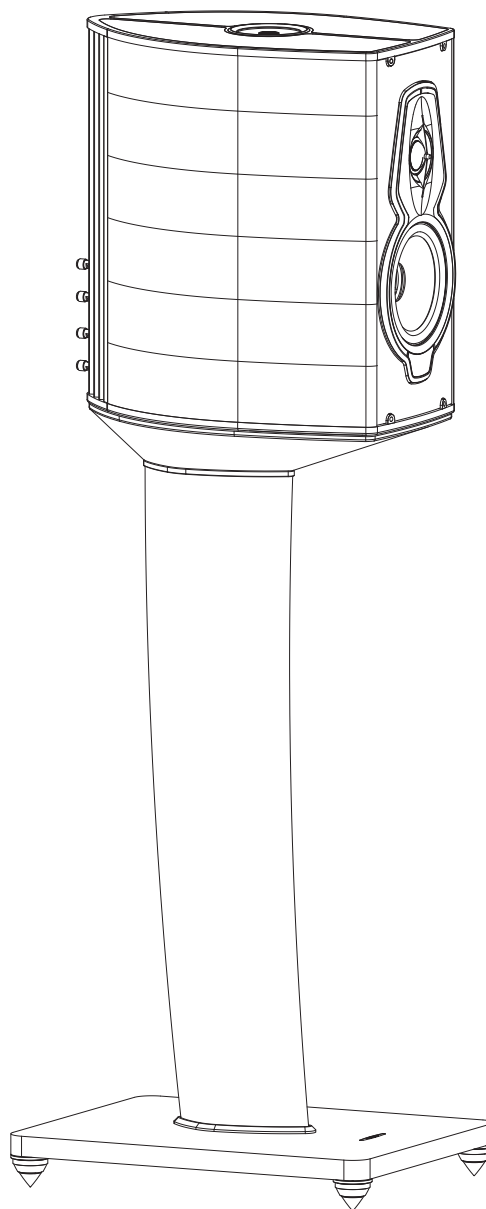
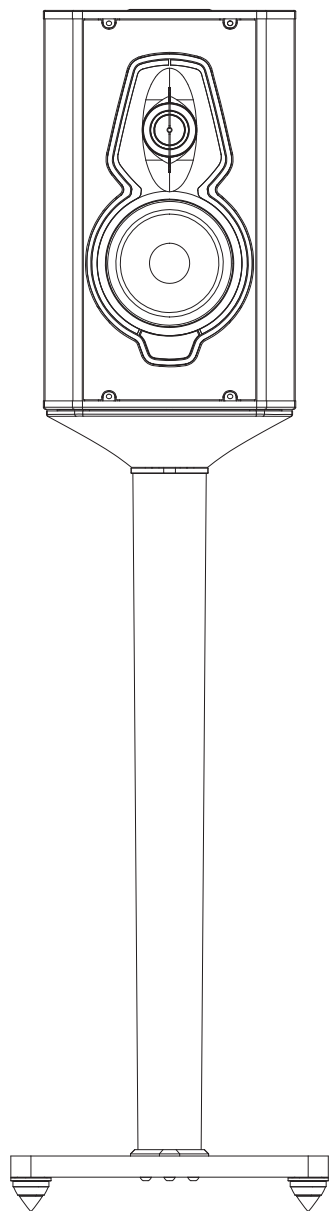
Venere
collection

Chameleon
collection

Principia
collection

Sonus faber

Guarneri
tradition
Serafino
tradition
Amati
tradition



Sf16

Aida

Lilium

Il Cremonese

Homage
tradition

Guarneri
tradition
Serafino
tradition
Amati
tradition

Sonus faber
Olympica
collection

Venere
collection

Chameleon
collection

Principia
collection

Sonus faber

TECHNICAL SPECIFICATIONS

SYSTEM

2 way, full para-aperiodic vented box "Stealth Ultraflex System" and "Zero Vibration Transmission" technology implemented on the dedicated stand, vibration transmission- decoupled from the floor, stand mount loudspeaker system.

CABINET

Lute shape design, multilayer, constrained-mode damping, enclosure formed using hand selected wood layers, quality graded and oriented for carefully optimized resonances control.

Sub-structural ribs are strategically placed for absolute rejection of spurious vibrations. "New Era" avional (from the "the Sonus faber" experience) exo-skeleton clamp structure with the Tuned Mass Damper inhibiting the residual resonances of the wooden structure.

TWEETER

H28 XTR-04. Sonus faber silk dome 28 mm "Arrow Point" DAD, implemented with a natural wood acoustic labyrinth rear chamber.

MIDWOOFER

W15 XTR-04. Sonus faber designed 150 mm neodymium magnet system ultra dynamic linearity midwoofer.

CROSS-OVER POINT

2.500Hz.

FREQUENCY RESPONSE

40 Hz – 35.000 Hz, Stealth reflex included.

SENSITIVITY

87 db SPL (2.83V/1 m).

NOMINAL IMPEDENCE

4 ohm

SUGGESTED AMPLIFIER POWER OUTPUT

30W – 250W, without clipping.

LONG-TERM MAX INPUT VOLTAGE (IEC 268-5)

20 V rms.

DIMENSIONS (HxWxD)

377 x 239 x 375 mm.

758 x 300 x 390 mm (dedicated stand).

TOTAL DIMENSIONS (HxWxD)

1205 x 320 x 510 mm

WEIGHT

16 Kg per pair

16 Kg per pair (dedicated stand)

Sf16

Aida

Lilium

Il Cremonese

Homage
tradition

Guarneri
tradition
Serafino
tradition
Amati
tradition

Sonus faber
Olympica
collection

Venere
collection

Chameleon
collection

Principia
collection

Sonus faber



Sonus faber
S E R A F I N O

T R A D I T I O N
Everyday **Luxury**

Sf16

Aida

Lilium

Il Cremonese

Homage
tradition

Guarneri
tradition
Serafino
tradition
Amati
tradition

Sonus faber
Olympica
collection

Venere
collection

Chameleon
collection

Principia
collection

Sonus faber



Sf16

Aida

Lilium

Il Cremonese

Homage
tradition

Guarneri
tradition
Serafino
tradition
Amati
tradition

Sonus faber
Olympica
collection

Venere
collection

Chameleon
collection

Principia
collection

Sonus faber



Sf16

Aida

Lilium

Il Cremonese

Homage
tradition

Guarneri
tradition
Serafino
tradition
Amati
tradition

Sonus faber
Olympica
collection

Venere
collection

Chameleon
collection

Principia
collection

Sonus faber



Sf16

Aida

Lilium

Il Cremonese

Homage
tradition

Sonus faber
Olympica
collection

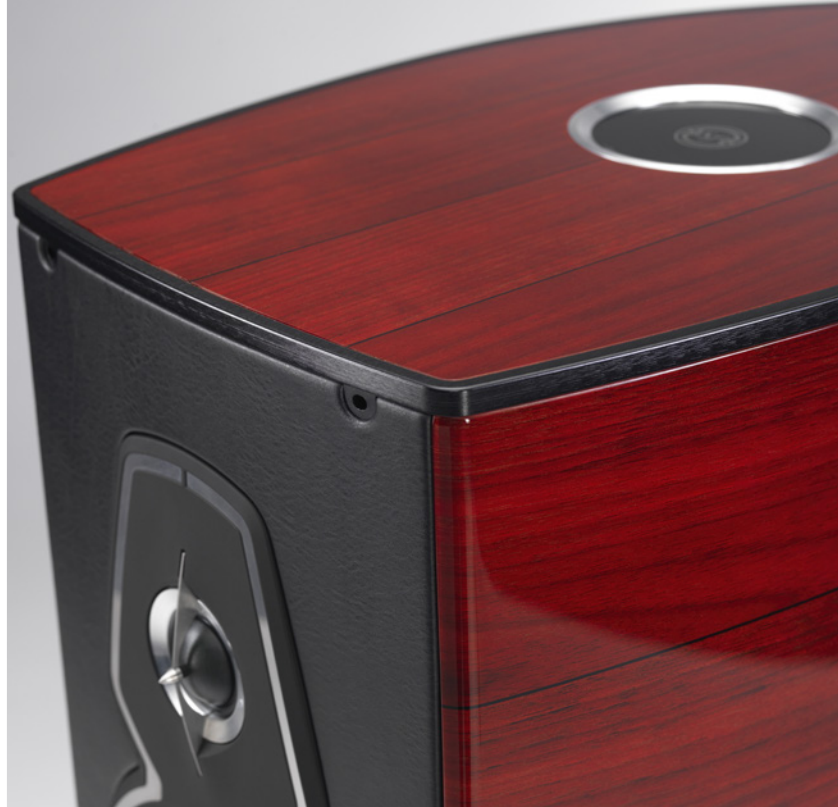
Venere
collection

Chameleon
collection

Principia
collection

Sonus faber

Guarneri
tradition
Serafino
tradition
Amati
tradition



Sf16

Aida

Lilium

Il Cremonese

Homage
tradition

Guarneri
tradition
Serafino
tradition
Amati
tradition

Sonus faber
Olympica
collection

Venere
collection

Chameleon
collection

Principia
collection

Sonus faber



Sf16

Aida

Lilium

Il Cremonese

Homage
tradition

Guarneri
tradition
Serafino
tradition
Amati
tradition

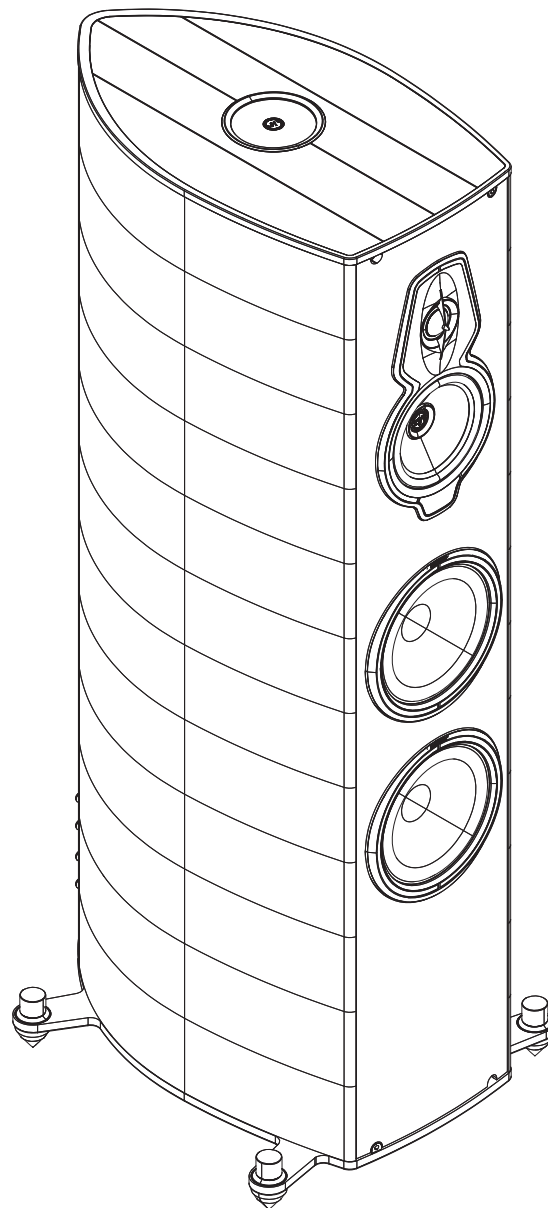
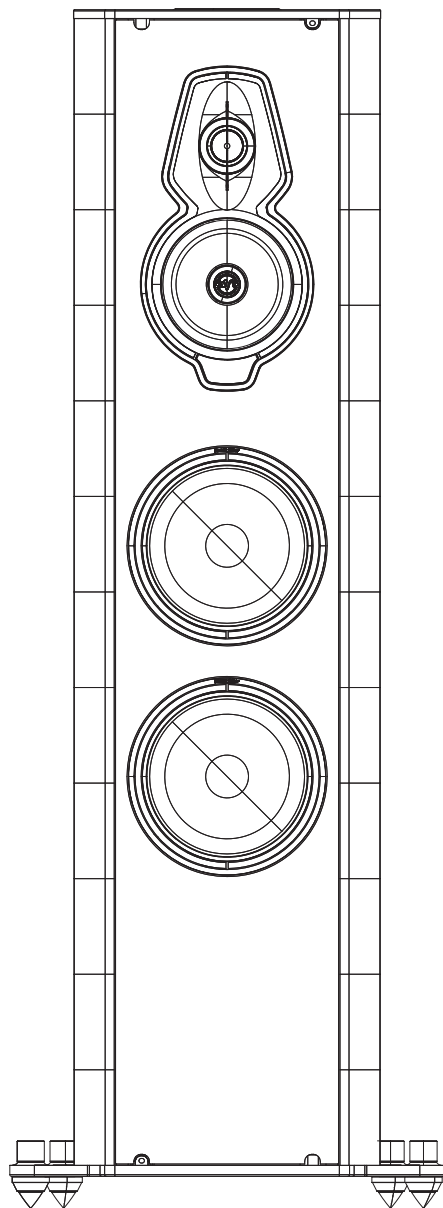
Sonus faber
Olympica
collection

Venere
collection

Chameleon
collection

Principia
collection

Sonus faber



Sf16

Aida

Lilium

Il Cremonese

Homage
tradition

Guarneri
tradition
Serafino
tradition
Amati
tradition

Sonus faber
Olympica
collection

Venere
collection

Chameleon
collection

Principia
collection

Sonus faber

TECHNICAL SPECIFICATIONS

SYSTEM

3.5 way, full para-aperiodic vented box "Stealth Ultraflex System" and "Zero Vibration Transmission" technology, vibration transmission-decoupled from the floor, staggered low frequency floorstanding loudspeaker system.

TWEETER

H28 XTR-04. Sonus faber silk dome 28 mm "Arrow Point" DAD, implemented with a natural wood acoustic labyrinth rear chamber.

MIDRANGE

M15 XTR-04. Sonus faber designed 150 mm neodymium magnet system ultra dynamic linearity midrange.

WOOFER

2 x W18XTR-08. Sonus faber designed 180 mm lightweight "sandwich" cone structure (high-tech syntactic foam core and two external surface skins of cellulose pulp) woofers.

CROSS-OVER POINT

80Hz - 250 Hz – 2.500Hz.

FREQUENCY RESPONSE

30 Hz – 35.000 Hz, Stealth reflex included.

SENSITIVITY

90 db SPL (2.83V/1 m).

NOMINAL IMPEDENCE

4 ohm

SUGGESTED AMPLIFIER POWER OUTPUT

80W – 350W, without clipping.

LONG-TERM MAX INPUT VOLTAGE (IEC 268-5)

22 V rms.

DIMENSIONS (HxWxD)

1091 x 396 x 485 mm.

WEIGHT

52 Kg

Sf16

Aida

Lilium

Il Cremonese

Homage
tradition

Guarneri
tradition
Serafino
tradition
Amati
tradition

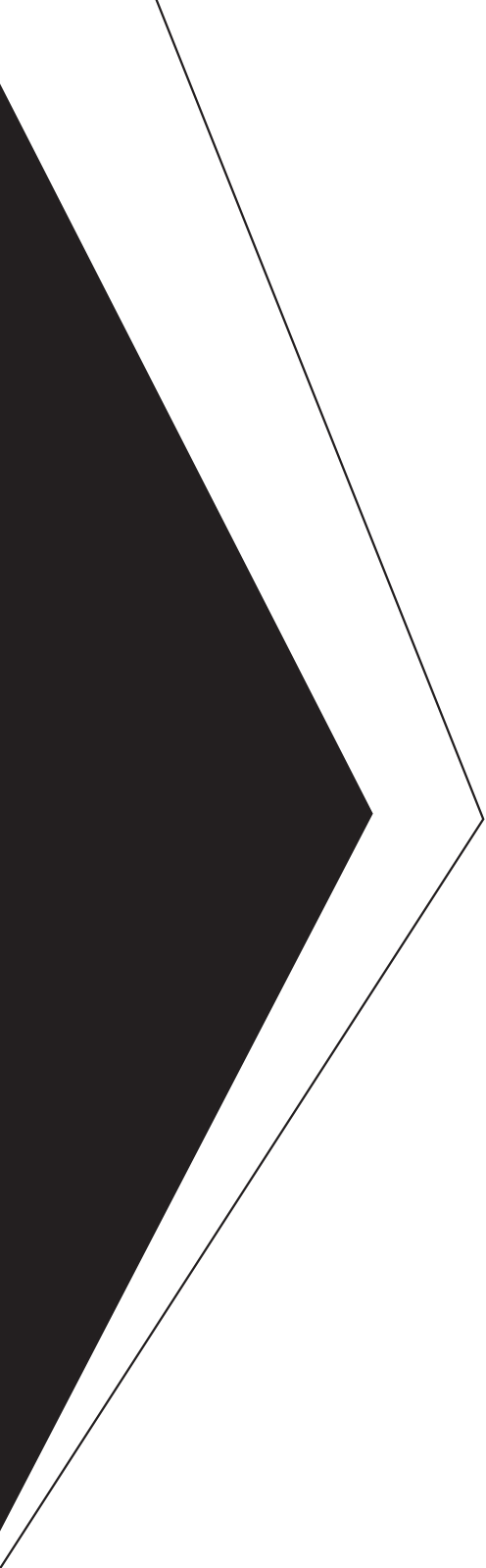
Sonus faber
Olympica
collection

Venere
collection

Chameleon
collection

Principia
collection

Sonus faber



Sonus faber

AMATI

TRADITION

Everyday **Luxury**

Sf16

Aida

Lilium

Il Cremonese

Homage
tradition

Guarneri
tradition
Serafino
tradition
Amati
tradition

Sonus faber
Olympica
collection

Venere
collection

Chameleon
collection

Principia
collection

Sonus faber



Sf16

Aida

Lilium

Il Cremonese

Homage
tradition

Sonus faber
Olympica
collection

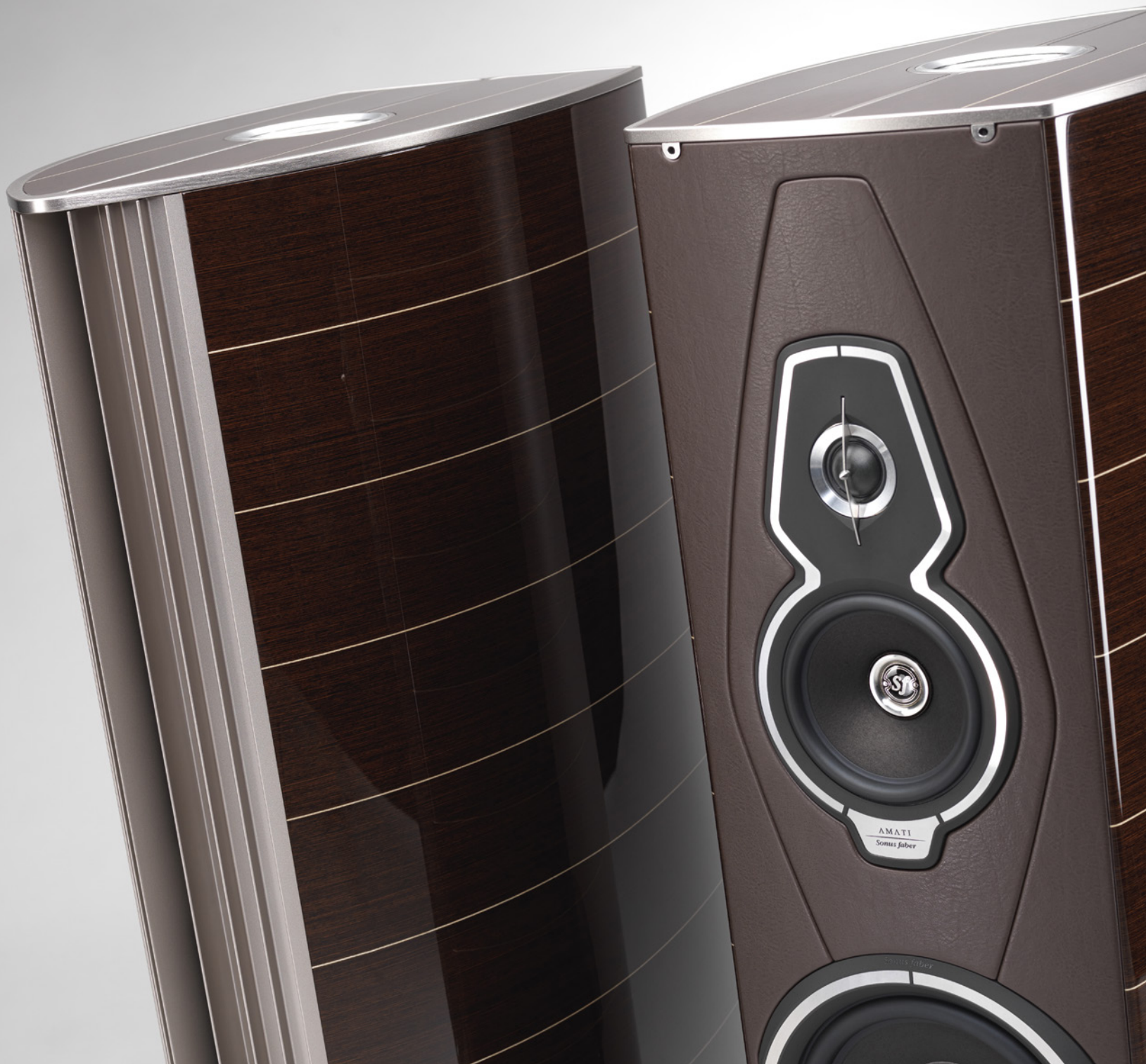
Venere
collection

Chameleon
collection

Principia
collection

Sonus faber

Guarneri
tradition
Serafino
tradition
Amati
tradition



Sf16

Aida

Lilium

Il Cremonese

Homage
tradition

Sonus faber
Olympica
collection

Venere
collection

Chameleon
collection

Principia
collection

Sonus faber

Guarneri
tradition
Serafino
tradition
Amati
tradition



Sf16

Aida

Lilium

Il Cremonese

Homage
tradition

Sonus faber
Olympica
collection

Venere
collection

Chameleon
collection

Principia
collection

Sonus faber

Guarneri
tradition
Serafino
tradition
Amati
tradition



Sf16

Aida

Lilium

Il Cremonese

Homage
tradition

Guarneri
tradition
Serafino
tradition
Amati
tradition

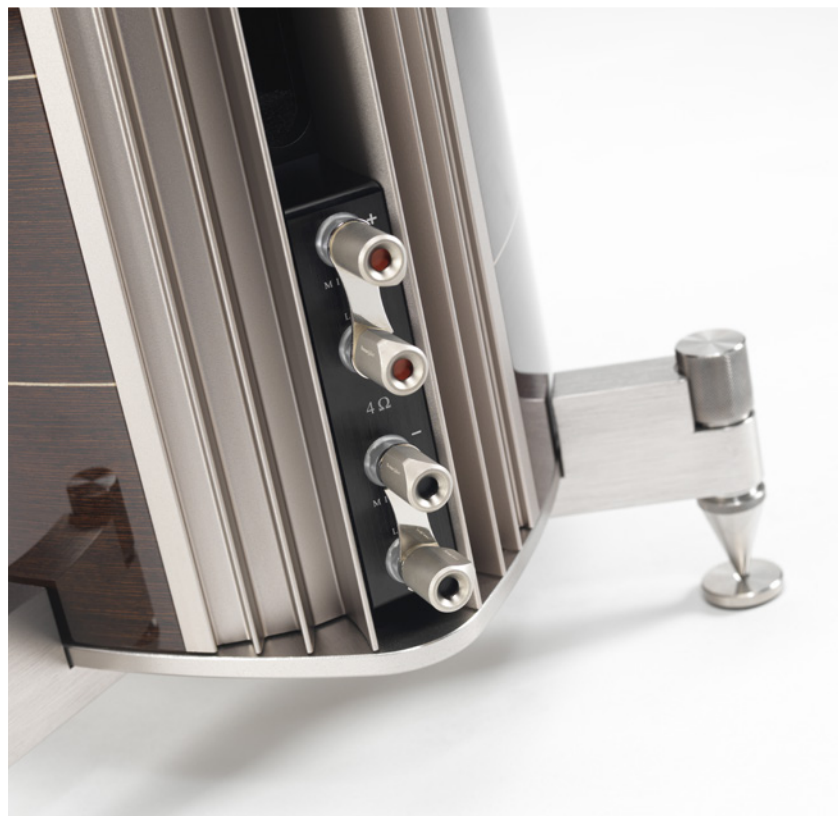
Sonus faber
Olympica
collection

Venere
collection

Chameleon
collection

Principia
collection

Sonus faber





Sf16

Aida

Lilium

Il Cremonese

Homage
tradition

Sonus faber
Olympica
collection

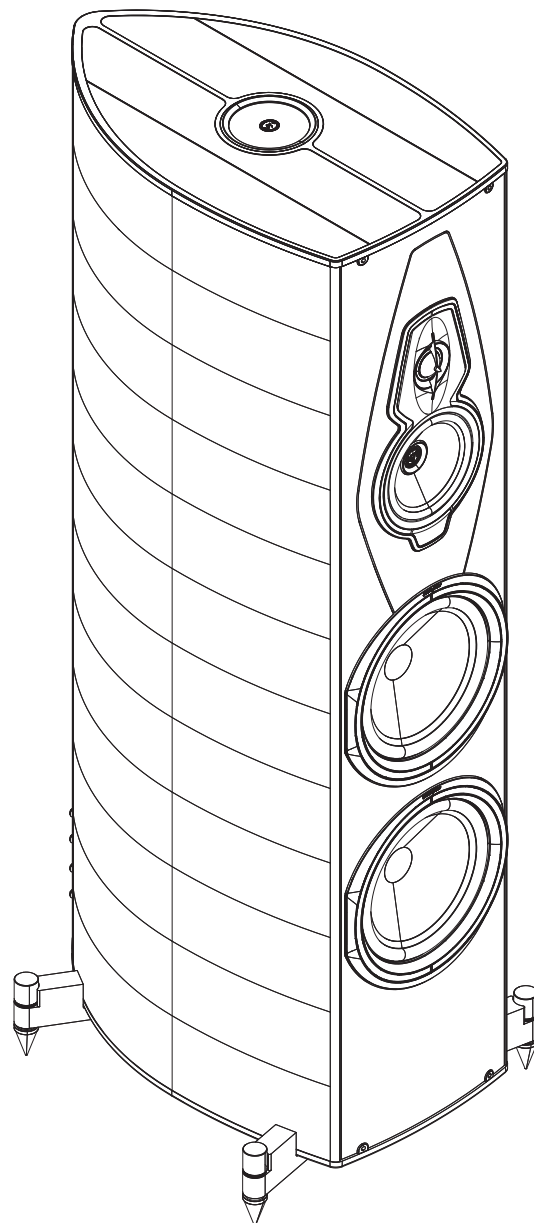
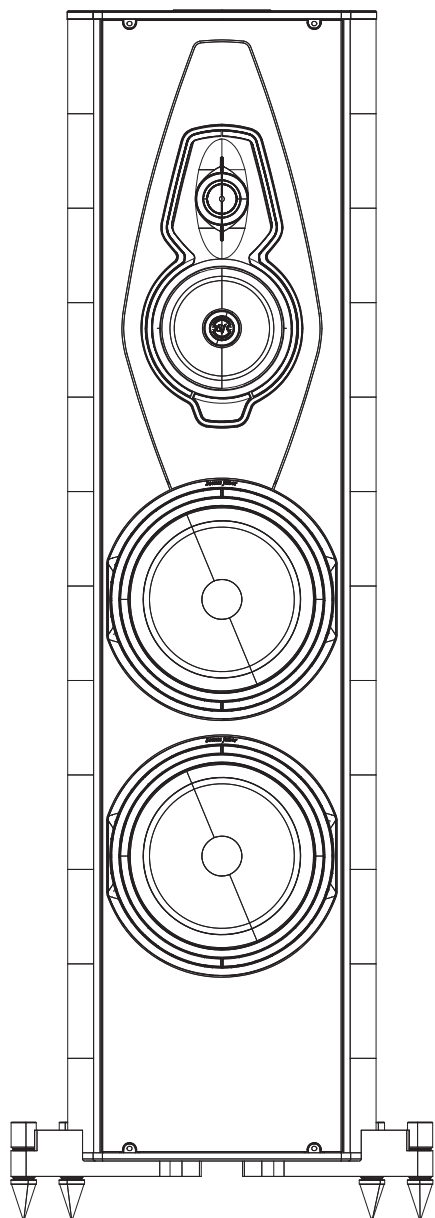
Venere
collection

Chameleon
collection

Principia
collection

Sonus faber

Guarneri
tradition
Serafino
tradition
Amati
tradition



Sf16

Aida

Lilium

Il Cremonese

Homage
tradition

Guarneri
tradition
Serafino
tradition
Amati
tradition

Sonus faber
Olympica
collection

Venere
collection

Chameleon
collection

Principia
collection

Sonus faber

TECHNICAL SPECIFICATIONS

SYSTEM

3.5 way, full para-aperiodic vented box "Stealth Ultraflex System" and "Zero Vibration Transmission" technology, vibration transmission- decoupled from the floor, staggered low frequency floorstanding loudspeaker system.

TWEETER

H28 XTR-04. Sonus faber silk dome 28 mm "Arrow Point" DAD, implemented with a natural wood acoustic labyrinth rear chamber.

MIDRANGE

M15 XTR-04. Sonus faber designed 150 mm neodymium magnet system ultra dynamic linearity midrange.

WOOFER

M15 XTR-04. Sonus faber designed 150 mm neodymium magnet system ultra dynamic linearity midrange.

CROSS-OVER POINT

80Hz - 250 Hz - 2.500Hz.

FREQUENCY RESPONSE

28 Hz - 35.000 Hz, Stealth reflex included.

SENSITIVITY

90 db SPL (2.83V/1 m).

NOMINAL IMPEDENCE

4 ohm

SUGGESTED AMPLIFIER POWER OUTPUT

100W - 500W, without clipping.

LONG-TERM MAX INPUT VOLTAGE (IEC 268-5)

25 V rms.

DIMENSIONS (HxWxD)

1176 x 411 x 512 mm.

WEIGHT

61 Kg

Sf16

Aida

Lilium

Il Cremonese

Homage
tradition

Guarneri
tradition
Serafino
tradition
Amati
tradition

Sonus faber
Olympica
collection

Venere
collection

Chameleon
collection

Principia
collection

Sonus faber

Sonus faber

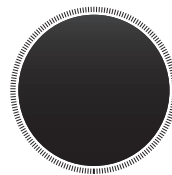
OLYMPICA

a new **classic** emotion

AVAILABLE FINISHES



WALNUT



PIANO BLACK

Sf16

Aida

Lilium

Il Cremonese

Homage
tradition

Sonus faber
Olympica
collection

Center
I
II
III

Venere
collection

Chameleon
collection

Principia
collection

Sonus faber



Sf16

Aida

Lilium

Il Cremonese

Homage
tradition

Sonus faber
Olympica
collection

Center
I
II
III

Venere
collection

Chameleon
collection

Principia
collection

Sonus faber



Sf16

Aida

Lilium

Il Cremonese

Homage
tradition

Sonus faber
Olympica
collection

Center
I
II
III

Venere
collection

Chameleon
collection

Principia
collection

Sonus faber



Sf16

Aida

Lilium

Il Cremonese

Homage
tradition

Sonus faber
Olympica
collection

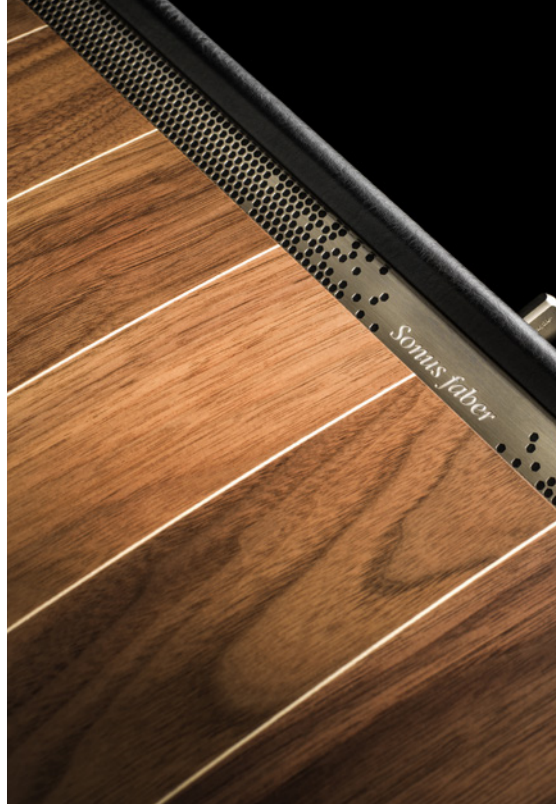
Center
I
II
III

Venere
collection

Chameleon
collection

Principia
collection

Sonus faber



Sf16

Aida

Lilium

Il Cremonese

Homage
tradition



Sonus faber
Olympica
collection

Center
I
II
III

Venere
collection

Chameleon
collection

Principia
collection

Sonus faber

Sonus faber

OLYMPICA CENTER

TECHNICAL SPECIFICATIONS

SYSTEM

3 way floorstanding, paralaminar "stealth ultraflex" vented loudspeaker.

CABINET

Enhanced "Lyre" shape design, progressive thickness triple curvature cabinet walls damped spread resonance spectrum system. Solid walnut vertical clamps.

TWEETER

Sonus faber "Arrow Point" DAD (Damped Apex Dome, synthesis of the classic dome and ring transducer) 29XTR2. A Sonus faber designed 29 mm moving coil driver. The ultra dynamic linearity is given by the new Neodymium motor system.

MIDRANGE

Sonus faber M8XTR. A Sonus faber designed 80 mm ultra dynamic linearity midwoofer. CCAW wire is used on a controlled "eddy current free" voice coil. The dynamically linear magnetic field motor has a focused field geometry. A special custom diaphragm is made with a blend of traditional cellulose pulp, kapok, kenaf and other natural fibers, developed according to the most natural sound. To further inhibit any residual cone coloration we are using a transparent viscous surface damping coating. A special coaxial anti-compressor is used, designed to remove cavity resonance and distortions.

WOOFERS

Sonus faber W15XTR. A totally Sonus faber designed 150 mm ultra dynamic linearity woofer. CCAW wire is used on a composite former "eddy current free" voice coil. The dynamically linear magnetic field motor incorporates triple Kellogg/Goeller rings. A special custom diaphragm is made with a real time air dried non pressed blend of traditional cellulose pulp, kapok, kenaf and other natural fibers, developed according to the most natural sound. To further inhibit any residual cone coloration we are using a transparent viscous surface damping coating.

CROSS-OVER

Non-resonant "progressive slope" design, optimized amplitude/phase response for optimal space/time performance. "Paracross topology" on both tweeter hi-pass and midrange band pass, cross-over points 250 Hz - 2.500 Hz. Highest quality components are used including Mundorf Evo Oil capacitors and Jantzen inductors.

FREQUENCY RESPONSE

50 Hz – 30.000 Hz, tuning port included.

SENSITIVITY

88 dB SPL (2.83 V/1m).

NOMINAL IMPEDANCE

4 ohm.

SUGGESTED AMPLIFIER POWER OUTPUT

50W – 300W, without clipping.

LONG-TERM MAXIMUM INPUT VOLTAGE (IEC-268-5)

22V rms.

DIMENSIONS (HxWxD)

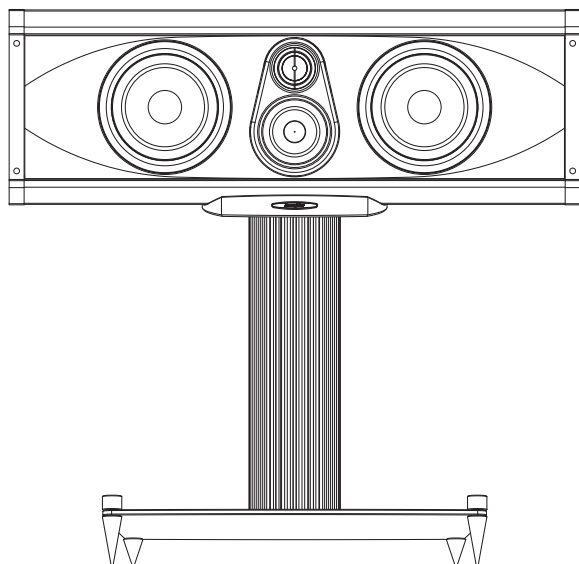
230 x 649 x 353 mm

OPTIONAL DEDICATED STAND (HxWxD)

443 x 438 x 310 mm

WEIGHT

17 kg Net



Sf16

Aida

Lilium

Il Cremonese

Homage
tradition

Sonus faber
Olympica
collection

Center
I
II
III

Venere
collection

Chameleon
collection

Principia
collection

Sonus faber



Sf16

Aida

Lilium

Il Cremonese

Homage
tradition

Sonus faber
Olympica
collection

Center
I
II
III

Venere
collection

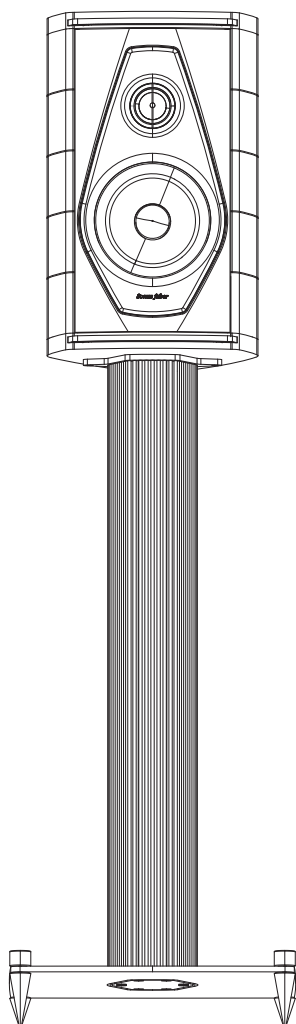
Chameleon
collection

Principia
collection

Sonus faber

Sonus faber

OLYMPICA I



TECHNICAL SPECIFICATIONS

SYSTEM

2 way standmount, paralaminar stealth flow vented loudspeaker.

CABINET

Enhanced "Lyre shape" design, progressive thickness triple curvature cabinet walls damped spread resonance spectrum system. Solid walnut vertical clamps.

TWEETER

Sonus faber "Arrow Point" DAD (Damped Apex Dome, synthesis of the classic dome and ring transducer) 29XTR2. A Sonus faber designed 29 mm moving coil driver. The ultra dynamic linearity is given by the new Neodymium motor system.

MID-WOOFER

Sonus faber MW15XTR. A totally Sonus faber designed 150 mm ultra dynamic linearity midwoofer. CCAW wire is used on a composite former "eddy current free" voice coil. The dynamically linear magnetic field motor incorporates triple Kellogg/Goeller rings.

A special custom diaphragm is made with a real time air dried non pressed blend of traditional cellulose pulp, kapok, kenaf and other natural fibers, developed according to the most natural sound. To further inhibit any residual cone coloration we are using a transparent viscous surface damping coating.

CROSS-OVER

Non-resonant "progressive slope" design, optimized amplitude/phase response for optimal space/time performance.

"Paracross topology" on both tweeter hi-pass and midwoofer low pass, cross-over point 2.500 Hz.

FREQUENCY RESPONSE

50 Hz – 30.000 Hz, tuning port included.

SENSITIVITY

87 dB SPL (2.83 V/1m).

NOMINAL IMPEDANCE

4 ohm.

SUGGESTED AMPLIFIER POWER OUTPUT

40W – 150W, without clipping.

LONG-TERM MAXIMUM INPUT VOLTAGE

(IEC-268-5)

20V rms.

DIMENSIONS (HxWxD)

354 x 222 x 368 mm.

OPTIONAL DEDICATED STAND (HxWxD)

708 x 287 x 376 mm

TOTAL DIMENSIONS (HxWxD)

1068 x 287 x 435 mm

WEIGHT

15 kg Net, 17 kg Gross

Sf16

Aida

Lilium

Il Cremonese

Homage
tradition

Sonus faber
Olympica
collection

Center
I
II
III

Venere
collection

Chameleon
collection

Principia
collection

Sonus faber



Sf16

Aida

Lilium

Il Cremonese

Homage
tradition

Sonus faber
Olympica
collection

Center
I
II
III

Venere
collection

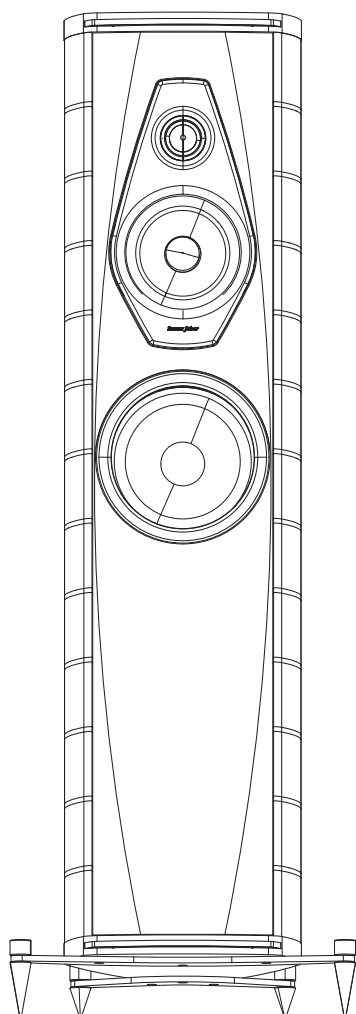
Chameleon
collection

Principia
collection

Sonus faber

Sonus faber

OLYMPICA II



TECHNICAL SPECIFICATIONS

SYSTEM

3 way floorstanding, paralaminar stealth flow vented loudspeaker.

CABINET

Enhanced "Lyre shape" design, progressive thickness triple curvature cabinet walls damped spread resonance spectrum system. Solid walnut vertical clamps.

TWEETER

Sonus faber "Arrow Point" DAD (Damped Apex Dome, synthesis of the classic dome and ring transducer) 29XTR2. A Sonus faber designed 29 mm moving coil driver. The ultra dynamic linearity is given by the new Neodymium motor system.

MIDRANGE

Sonus faber M15XTR. A totally Sonus faber designed 150 mm ultra dynamic linearity midwoofer. CCAW wire is used on a composite former "eddy current free" voice coil. The dynamically linear magnetic field motor incorporates triple Kellogg/Goeller rings. A special custom diaphragm is made with a real time air dried non pressed blend of traditional cellulose pulp, kapok, kenaf and other natural fibers, developed according to the most natural sound.

To further inhibit any residual cone coloration we are using a transparent viscous surface damping coating. Special coaxial anti-compressors is used, designed to remove cavity resonance and distortions.

WOOFER

Sonus faber woofer W18XTR is a direct descendant of the 9" speakers used in "Aida". The salient aspect of the woofer, is to merge high definition, the prerogative of the 'sandwich' cones, and an identity in synergy with the sound of the midrange. This goal was reached by developing a "sandwich" membrane that combines a "heart" in hi-tech rigid syntactic foam with external layers in treated cellulose pulp. The 1.5" voice coils "controlled Eddy Current", together with the powerful long stroke magnetic motor, are guarantees for excellent performance, both from the dynamic point of view and that of linearity.

CROSS-OVER

Non-resonant "progressive slope" design, optimized amplitude/phase response for optimal space/time performance. "Paracross topology" on both tweeter hi-pass and midrange band pass, cross-over points 250 hz - 2.500 Hz.

FREQUENCY RESPONSE

40 Hz – 30.000 Hz, tuning port included.

SENSITIVITY

88 dB SPL (2.83 V/1m).

NOMINAL IMPEDANCE

4 ohm.

SUGGESTED AMPLIFIER POWER OUTPUT

50W – 250W, without clipping.

LONG-TERM MAXIMUM INPUT VOLTAGE (IEC-268-5)

20V rms.

DIMENSIONS (HxWxD)

1055 x 370 x 472 mm

WEIGHT

68 kg Net, 71 kg Gross

Sf16

Aida

Lilium

Il Cremonese

Homage
tradition

Sonus faber
Olympica
collection

Center
I
II
III

Venere
collection

Chameleon
collection

Principia
collection

Sonus faber



Sf16

Aida

Lilium

Il Cremonese

Homage
tradition

Sonus faber
Olympica
collection

Center
I
II
III

Venere
collection

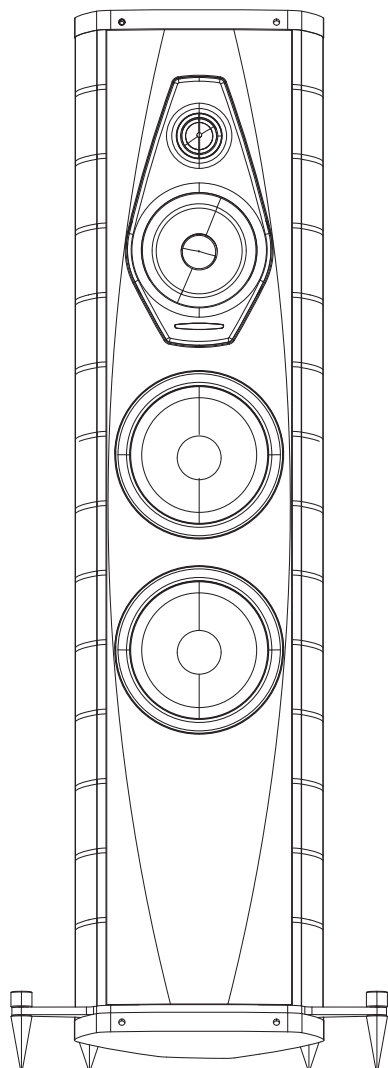
Chameleon
collection

Principia
collection

Sonus faber

Sonus faber

OLYMPICA III



TECHNICAL SPECIFICATIONS

SYSTEM

3 way floorstanding, paralaminar stealth flow vented loudspeaker.

CABINET

Enhanced "Lyre shape" design, progressive thickness triple curvature cabinet walls damped spread resonance spectrum system. Solid walnut vertical clamps.

TWEETER

Sonus faber "Arrow Point" DAD (Damped Apex Dome, synthesis of the classic dome and ring transducer) 29XTR2. A Sonus faber designed 29 mm moving coil driver. The ultra dynamic linearity is given by the new Neodymium motor system.

MIDRANGE

Sonus faber M15XTR. A totally Sonus faber designed 150 mm ultra dynamic linearity midwoofer. CCAW wire is used on a composite former "eddy current free" voice coil. The dynamically linear magnetic field motor incorporates triple Kellog/Goeller rings. A special custom diaphragm is made with a real time air dried non pressed blend of traditional cellulose pulp, kapok, kenaf and other natural fibers, developed according to the most natural sound.

To further inhibit any residual cone coloration we are using a transparent viscous surface damping coating. Special coaxial anti-compressors is used, designed to remove cavity resonance and distortions.

WOOFERS

Sonus faber wooferS W18XTR are direct descendants of the 9" speakers used in "Aida". The salient aspect of the woofers, is to merge high definition, the prerogative of the 'sandwich' cones, and an identity in synergy with the sound of the midrange. This goal was reached by developing a "sandwich" membrane that combines a "heart" in hi-tech rigid syntactic foam with external layers in treated cellulose pulp. The 1.5" voice coils "controlled Eddy Current", together with the powerful long stroke magnetic motor, are guarantees for excellent performance, both from the dynamic point of view and that of linearity.

CROSS-OVER

Non-resonant "progressive slope" design, optimized amplitude/phase response for optimal space/time performance. "Paracross topology" on both tweeter hi-pass and midrange band pass, cross-over points 250 Hz - 2.500 Hz.

FREQUENCY RESPONSE

35 Hz – 30.000 Hz, tuning port included.

SENSITIVITY

90 dB SPL (2.83 V/1m).

NOMINAL IMPEDANCE

4 ohm.

SUGGESTED AMPLIFIER POWER OUTPUT

50W – 300W, without clipping.

LONG-TERM MAXIMUM INPUT VOLTAGE

(IEC-268-5)
22V rms.

DIMENSIONS (HxWxD)

1114 x 403 x 508 mm

WEIGHT

88 kg Net, 91 kg Gross

Sf16

Aida

Lilium

Il Cremonese

Homage
tradition

Sonus faber
Olympica
collection

Center
I
II
III

Venere
collection

Chameleon
collection

Principia
collection

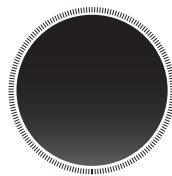
Sonus faber

Sonus faber
Venere
luxurious&fun

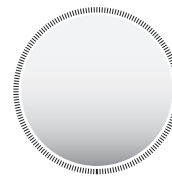
AVAILABLE FINISHES



WOOD



BLACK



WHITE

Sf16

Aida

Lilium

Il Cremonese

Homage
tradition

Sonus faber
Olympica
collection

Venere
collection

Center
Wall

1.5

2.0

2.5

Chameleon
collection

3.0

Signature

Principia
collection

Sonus faber



Sf16

Aida

Lilium

Il Cremonese

Homage
tradition

Sonus faber
Olympica
collection

Venere
collection

Chameleon
collection

Principia
collection

Sonus faber

Center
Wall
1.5
2.0
2.5
3.0
Signature



Sf16

Aida

Lilium

Il Cremonese

Homage
tradition

Sonus faber
Olympica
collection

Venere
collection

Chameleon
collection

Principia
collection

Center
Wall
1.5
2.0
2.5
3.0
Signature

Sonus faber



Sf16

Aida

Lilium

Il Cremonese

Homage
tradition

Sonus faber
Olympica
collection

Venere
collection

Chameleon
collection

Principia
collection

Sonus faber

Center
Wall
1.5
2.0
2.5
3.0
Signature



Sf16

Aida

Lilium

Il Cremonese

Homage
tradition

Sonus faber
Olympica
collection

Venere
collection

Chameleon
collection

Principia
collection

Sonus faber

Center
Wall
1.5
2.0
2.5
3.0
Signature



Venere
center

TECHNICAL SPECIFICATIONS

SYSTEM

2 way bookshelf vented box

TWEETER

29 mm high definition precoated fabric dome driver with no ferrofluid. Sonus faber design.

MID-WOOFER

2x150 mm driver. Free compression basket design and Curv cone. Ultra dynamic performance and linearity. Sonus faber design.

CROSS-OVER POINTS

1.800Hz

FREQUENCY RESPONSE

60 Hz-25.000 Hz

SENSITIVITY (2.83V/1M)

89 dB SPL

NOMINAL IMPEDENCE

6 ohm

SUGGESTED AMPLIFIER POWER OUTPUT

30W – 150W without clipping

LONG-TERM MAX INPUT VOLTAGE (IEC-268-5)

22V rms

DIMENSIONS (HxWxD)

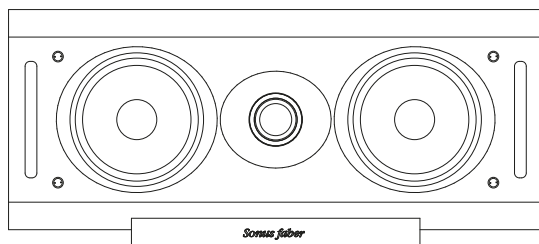
222x500x290 mm

TOTAL DIMENSIONS (HxWxD)

222x500x290 mm

WEIGHT

9,50 Kg each



Sf16

Aida

Lilium

Il Cremonese

Homage
tradition

Sonus faber
Olympica
collection

Venere
collection

Chameleon
collection

Principia
collection

Sonus faber

Center
Wall
1.5
2.0
2.5
3.0
Signature



Sf16

Aida

Lilium

Il Cremonese

Homage
tradition

Sonus faber
Olympica
collection

Venere
collection

Chameleon
collection

Principia
collection

Sonus faber

Center
Wall
1.5
2.0
2.5
3.0
Signature

Venere
wall

TECHNICAL SPECIFICATIONS

SYSTEM

2 way wallmount closed box
with passive radiator

TWEETER

29 mm high definition precoated fabric dome driver
with no ferrofluid. Sonus faber design.

MID-WOOFER

1x150 mm driver. Free compression basket design and
Curv cone. Ultra dynamic performance and linearity.
Sonus faber design.

PASSIVE RADIATOR

1x150 mm driver. Free compression basket design and
Curv cone. Sonus faber design.

CROSS-OVER POINTS

2.000Hz

FREQUENCY RESPONSE

50 Hz-25.000 Hz

SENSITIVITY (2.83V/1M)

87 dB SPL

NOMINAL IMPEDENCE

6 ohm

SUGGESTED AMPLIFIER POWER OUTPUT

30W – 150W without clipping

LONG-TERM MAX INPUT VOLTAGE (IEC-268-5)

20V rms

DIMENSIONS (HXWXD)

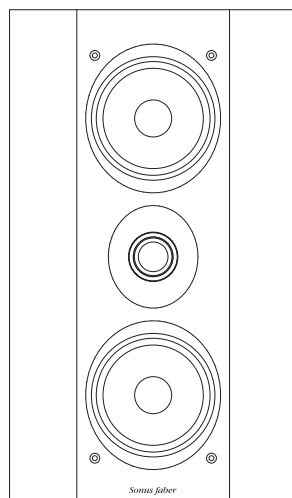
291x500x170 mm

TOTAL DIMENSIONS (HXWXD)

291x500x170 mm

WEIGHT

6,25 Kg each



Sf16

Aida

Lilium

Il Cremonese

Homage
tradition

Sonus faber
Olympica
collection

Venere
collection

Chameleon
collection

Principia
collection

Sonus faber

Center
Wall
1.5
2.0
2.5
3.0
Signature



Sf16

Aida

Lilium

Il Cremonese

Homage
tradition

Sonus faber
Olympica
collection

Venere
collection

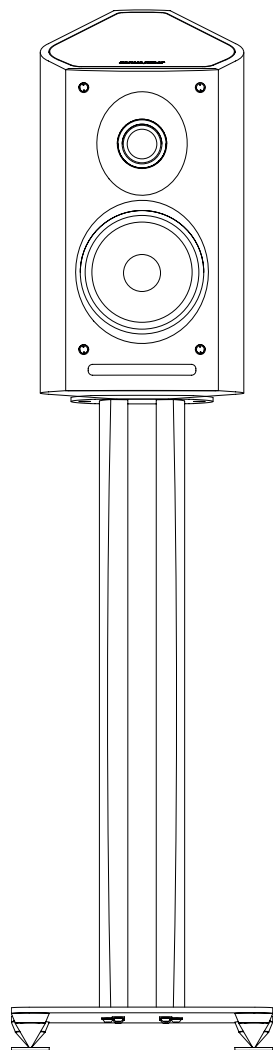
Chameleon
collection

Principia
collection

Sonus faber

Center
Wall
1.5
2.0
2.5
3.0
Signature

Venere 1.5



TECHNICAL SPECIFICATIONS

SYSTEM

2 way standmount bookshelf vented box

TWEETER

29 mm high definition precoated fabric dome driver with no ferrofluid. Sonus faber design.

MID-WOOFER

1x150 mm driver. Free compression basket design and Curv cone. Ultra dynamic performance and linearity. Sonus faber design.

CROSS-OVER POINTS

2.000Hz

FREQUENCY RESPONSE

50Hz-25.000 Hz

SENSITIVITY (2.83V/1M)

85 dB SPL

NOMINAL IMPEDENCE

6 ohm

SUGGESTED AMPLIFIER POWER OUTPUT

30W – 150W without clipping

LONG-TERM MAX INPUT VOLTAGE (IEC-268-5)

20V rms

DIMENSIONS (HXWXD)

394x206x300 mm

OPTIONAL DEDICATED STAND (HxWxD)

698x276x326 mm

TOTAL DIMENSIONS (HxWxD)

1076x276x382 mm

WEIGHT

6,00 Kg each

Sf16

Aida

Lilium

Il Cremonese

Homage
tradition

Sonus faber
Olympica
collection

Venere
collection

Chameleon
collection

Principia
collection

Sonus faber

Center
Wall
1.5
2.0
2.5
3.0
Signature



Sf16

Aida

Lilium

Il Cremonese

Homage
tradition

Sonus faber
Olympica
collection

Venere
collection

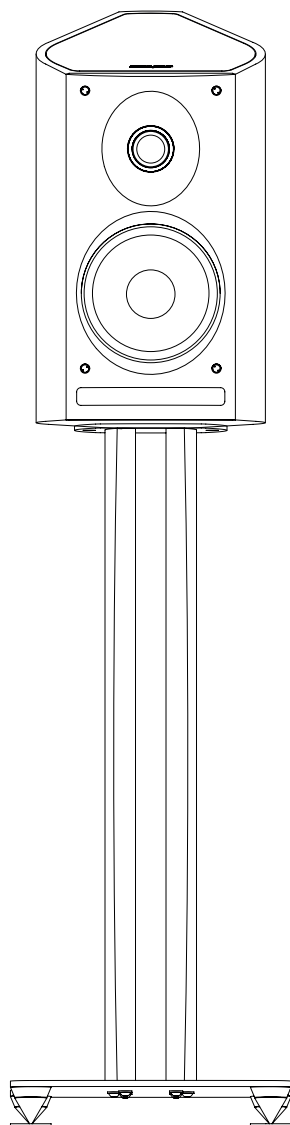
Chameleon
collection

Principia
collection

Sonus faber

Center
Wall
1.5
2.0
2.5
3.0
Signature

Venere 2.0



TECHNICAL SPECIFICATIONS

SYSTEM

2 way standmount bookshelf vented box

TWEETER

29 mm high definition precoated fabric dome driver with no ferrofluid. Sonus faber design.

MID-WOOFER

1x180 mm driver. Free compression basket design and Curv cone. Ultra dynamic performance and linearity. Sonus faber design.

CROSS-OVER POINTS

2.500Hz

FREQUENCY RESPONSE

45Hz-25.000 Hz

SENSITIVITY (2.83V/1M)

88 dB SPL

NOMINAL IMPEDENCE

6 ohm

SUGGESTED AMPLIFIER POWER OUTPUT

50W – 200W without clipping

LONG-TERM MAX INPUT VOLTAGE (IEC-268-5)

22V rms

DIMENSIONS (HXWXD)

449x246x336 mm

OPTIONAL DEDICATED STAND (HxWxD)

698x276x326 mm

TOTAL DIMENSIONS (HxWxD)

1130x276x391 mm

WEIGHT

7,00 Kg each

Sf16

Aida

Lilium

Il Cremonese

Homage
tradition

Sonus faber
Olympica
collection

Venere
collection

Chameleon
collection

Principia
collection

Sonus faber

Center
Wall
1.5
2.0
2.5
3.0
Signature



Sf16

Aida

Lilium

Il Cremonese

Homage
tradition

Sonus faber
Olympica
collection

Venere
collection

Chameleon
collection

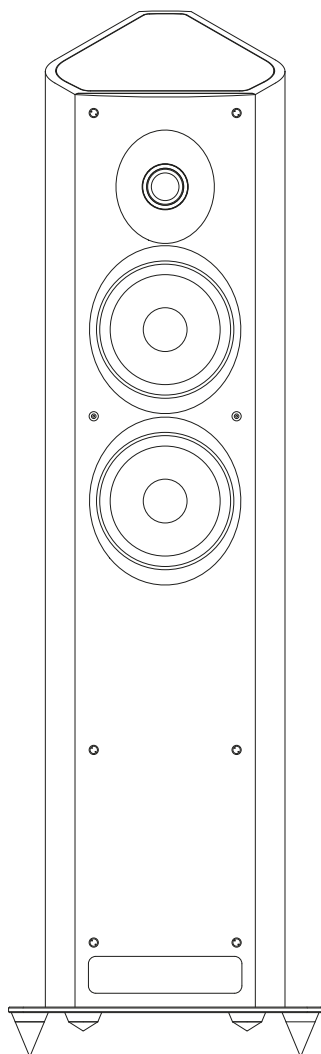
Principia
collection

Sonus faber

Center
Wall
1.5
2.0
2.5
3.0
Signature

Venere 2.5

TECHNICAL SPECIFICATIONS



SYSTEM

2.5 way floorstanding vented box

TWEETER

29 mm high definition precoated fabric dome driver with no ferrofluid. Sonus faber design.

MID-WOOFER

1x180 mm driver. Free compression basket design and Curv cone. Ultra dynamic performance and linearity. Sonus faber design.

WOOFER

1x180 mm driver. Free compression basket design and Curv cone. Ultra dynamic performance and linearity. Sonus faber design.

CROSS-OVER POINTS

250Hz-2.500Hz

FREQUENCY RESPONSE

40 Hz-25.000 Hz

SENSITIVITY (2.83V/1M)

89 dB SPL

NOMINAL IMPEDENCE

6 ohm

SUGGESTED AMPLIFIER POWER OUTPUT

40W – 250W without clipping

LONG-TERM MAX INPUT VOLTAGE (IEC-268-5)

22V rms

DIMENSIONS (HxWxD)

1107x340x437 mm

TOTAL DIMENSIONS (HxWxD)

1107x340x437 mm

WEIGHT

19,45 Kg each

Sf16

Aida

Lilium

Il Cremonese

Homage
tradition

Sonus faber
Olympica
collection

Venere
collection

Chameleon
collection

Principia
collection

Sonus faber

Center
Wall
1.5
2.0
2.5
3.0
Signature



Sf16

Aida

Lilium

Il Cremonese

Homage
tradition

Sonus faber
Olympica
collection

Venere
collection

Chameleon
collection

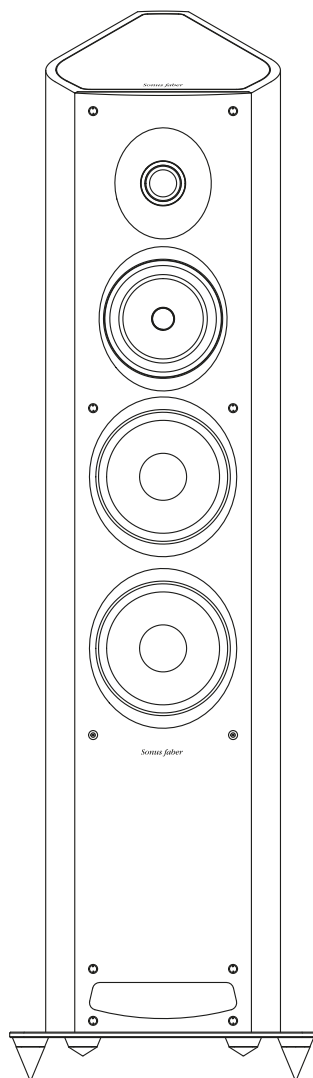
Principia
collection

Sonus faber

Center
Wall
1.5
2.0
2.5
3.0
Signature

Venere 3.0

TECHNICAL SPECIFICATIONS



SYSTEM

3 way floorstanding vented box

TWEETER

29 mm high definition precoated fabric dome driver with no ferrofluid. Sonus faber design.

MIDRANGE

1x150 mm cone driver. Free compression basket design and thermo-mouldered polypropylene textile cone (Curv). Ultra dynamic performance and linearity. Special coaxial anti-compressor is used to remove resonances and distortions. Sonus faber design.

WOOFER

2x180 mm driver. Free compression basket design and Curv cone. Ultra dynamic performance and linearity. Sonus faber design.

CROSS-OVER POINTS

180-220-2.300Hz

FREQUENCY RESPONSE

38 Hz-25.000 Hz

SENSITIVITY (2.83V/1M)

90 dB SPL

NOMINAL IMPEDENCE

6 ohm

SUGGESTED AMPLIFIER POWER OUTPUT

40W – 300W without clipping

LONG-TERM MAX INPUT VOLTAGE (IEC-268-5)

22V rms

DIMENSIONS (HxWxD)

1157x340x438 mm

TOTAL DIMENSIONS (HxWxD)

1157x340x43 mm

WEIGHT

21,30 Kg each

Sf16

Aida

Lilium

Il Cremonese

Homage
tradition

Sonus faber
Olympica
collection

Venere
collection

Chameleon
collection

Principia
collection

Sonus faber

Center
Wall
1.5
2.0
2.5
3.0
Signature



Sf16

Aida

Lilium

Il Cremonese

Homage
tradition

Sonus faber
Olympica
collection

Venere
collection

Chameleon
collection

Principia
collection

Sonus faber

Center
Wall
1.5
2.0
2.5
3.0
Signature

Venere S

TECHNICAL SPECIFICATIONS

Sf16

Aida

Lilium

Il Cremonese

Homage
tradition

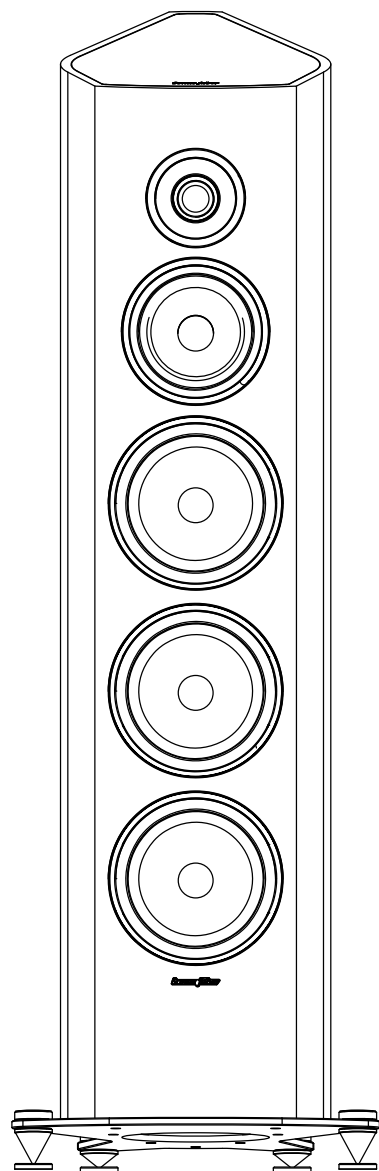
Sonus faber
Olympica
collection

Venere
collection

Chameleon
collection

Principia
collection

Sonus faber



SYSTEM

3 way floorstanding speaker

TWEETER

29mm high definition precoated fabric dome driver. DKM dome diaphragm visco-elastically decoupled from the baffle. Sonus faber design.

MIDRANGE

1x150mm cone driver. Ultra free compression basket, Sonus faber design. Thermo-mouldered polypropylene textile cone (Curv). Ultra dynamic performance and linearity. Special coaxial anti-compressor is used to remove resonances and distortions. Sonus faber design.

WOOFER

3x180mm cone driver. Free compression basket, Sonus faber design. Aluminium cone for maximum speed. Ultra dynamic performance and linearity. Sonus faber design

CROSS-OVER

Non-resonant "progressive-slope" design, optimized phase response for optimal space/time performance, "paracorss topology" on every network. (Nano-technology deposition on the pcb rails). Cross-over point: 250Hz – 2500 Hz

FREQUENCY RESPONSE

40 Hz -25.000 Hz

SENSITIVITY (2.83V/1M)

90dB SPL

NOMINAL IMPEDENCE

4 ohm

SUGGESTED AMPLIFIER POWER OUTPUT

40W – 300W without clipping

LONG-TERM MAX INPUT VOLTAGE (IEC-268-5)

22V rms

TOTAL DIMENSIONS (HxWxD)

1.236 x 391 x 477,5 mm

WEIGHT

28,8 Kg each

Center
Wall

1.5

2.0

2.5

3.0

Signature

Sonus faber
Chameleon
collection

FOR NEW FINISHES,
VISIT OUR WEBSITE WWW.SONUSFABER.COM



Sf16

Aida

Lilium

Il Cremonese

Homage
tradition

Sonus faber
Olympica
collection

Venere
collection

Chameleon
collection

B
T
Center

Principia
collection

Sonus faber



Sf16

Aida

Lilium

Il Cremonese

Homage
tradition

Sonus faber
Olympica
collection

Venere
collection

Chameleon
collection

B
T
Center

Principia
collection

Sonus faber



Sf16

Aida

Lilium

Il Cremonese

Homage
tradition

Sonus faber
Olympica
collection

Venere
collection

Chameleon
collection

B
T
Center

Principia
collection

Sonus faber



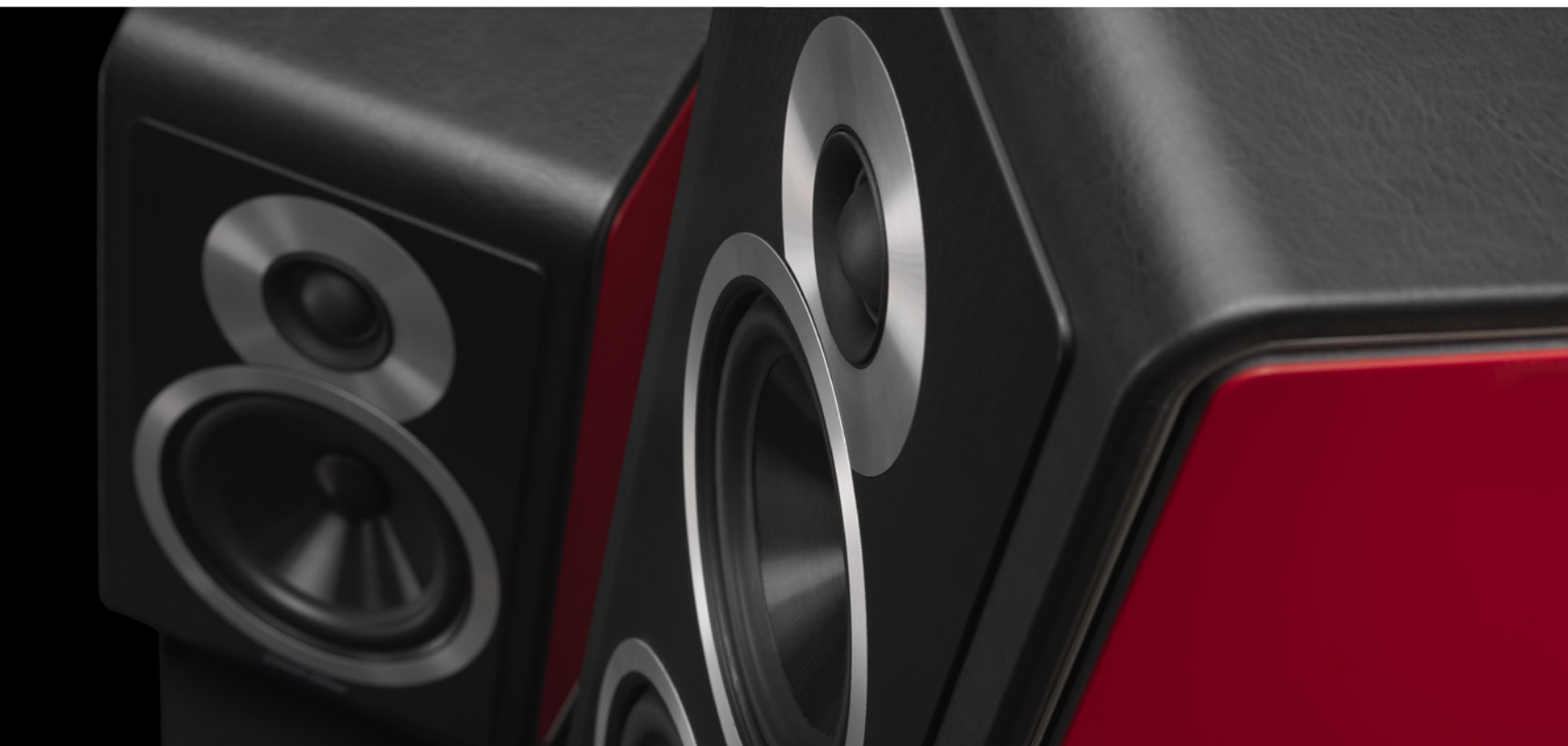
Sf16

Aida

Lilium

Il Cremonese

Homage
tradition



Sonus faber
Olympica
collection

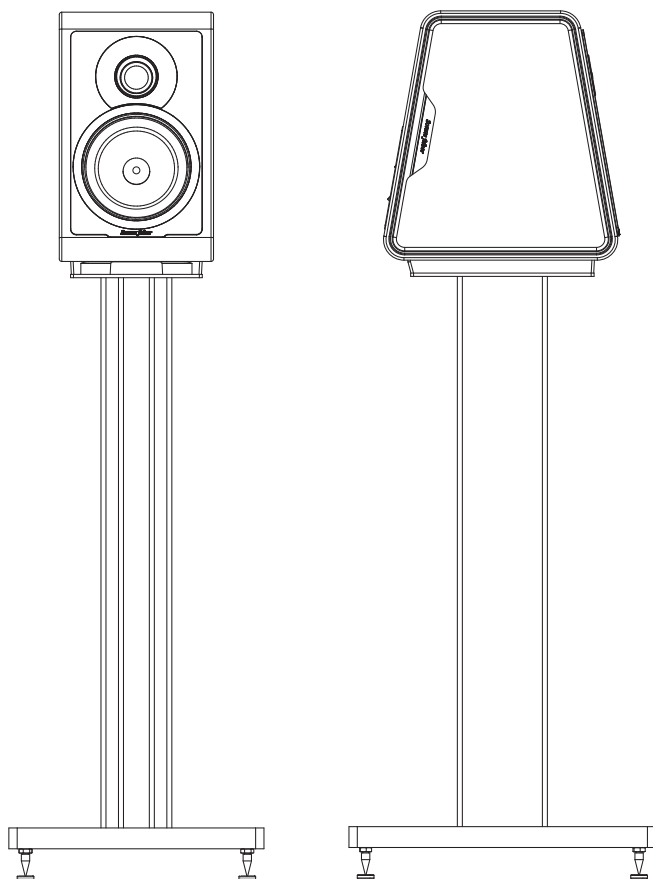
Venere
collection

Chameleon
collection | B
T
Center

Principia
collection

Sonus faber

Sonus faber
Chameleon B.



TECHNICAL SPECIFICATIONS

LOUDSPEAKER SYSTEM

2 way bookshelf vented box

TWEETER

29 mm high definition precoated fabric dome driver with no ferrofluid. Sonus faber design.

MID-WOOFERS

1x150 mm. Free compression basket design and PP cone. Ultra dynamic performance and linearity. Sonus faber design.

CROSS-OVER POINTS

2.500 Hz

FREQUENCY RESPONSE

50 Hz – 25.000 Hz

SENSITIVITY (2.83V/1m)

87 dB SPL

NOMINAL IMPEDANCE

4 Ohm

SUGGESTED AMPLIFIER POWER OUTPUT

30W – 150W without clipping

LONG-TERM MAX INPUT VOLTAGE (IEC-268-5)

20V rms

DIMENSIONS HXWXD (MM)

315,5 x 185 x 283

OPTIONAL DEDICATED STAND HXWXD (MM)

725 x 306 x 370

WEIGHT (kg/each)

6,7

Sf16

Aida

Lilium

Il Cremonese

Homage
tradition

Sonus faber
Olympica
collection

Venere
collection

Chameleon
collection

B
T
Center

Principia
collection

Sonus faber



Sf16

Aida

Lilium

Il Cremonese

Homage
tradition

Sonus faber
Olympica
collection

Venere
collection

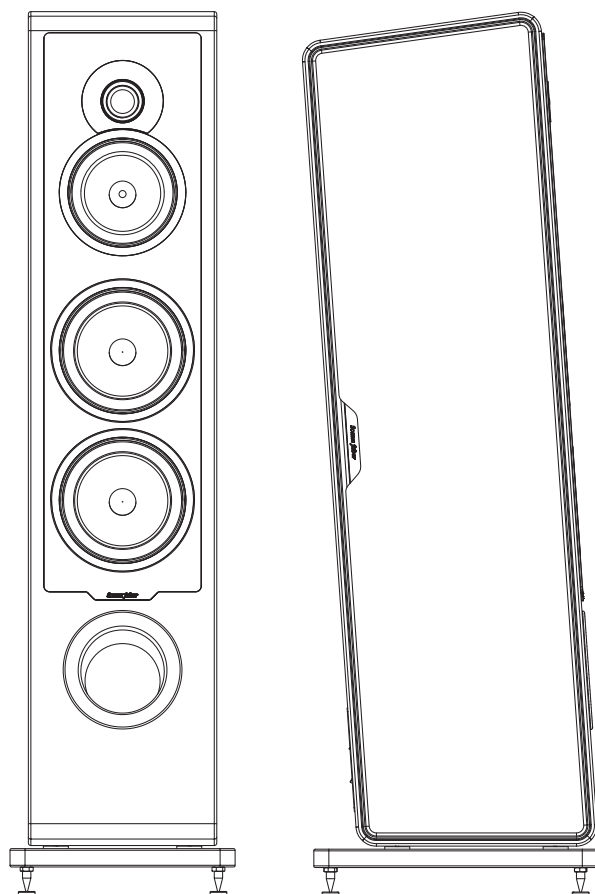
Chameleon
collection

B
T
Center

Principia
collection

Sonus faber

Sonus faber
Chameleon T.



TECHNICAL SPECIFICATIONS

LOUDSPEAKER SYSTEM

2 way bookshelf vented box

TWEETER

29 mm high definition precoated fabric dome driver with no ferrofluid. Sonus faber design.

MIDRANGE

1x150 mm. Free compression basket design and thermo- mouldered polypropylene cone (PP). Ultra dynamic performance and linearity. Sonus faber design.

WOOFER

2x180 mm. Free compression basket design and PP cone. Ultra dynamic performance and linearity. Sonus faber design.

CROSS-OVER POINTS

250 Hz - 2.500 Hz

FREQUENCY RESPONSE

38 Hz – 25.000 Hz

SENSITIVITY (2.83V/1m)

90 dB SPL

NOMINAL IMPEDANCE

4 Ohm

SUGGESTED AMPLIFIER POWER OUTPUT

40W – 300W
without clipping

LONG-TERM MAX INPUT VOLTAGE (IEC-268-5)

22V rms

TOTAL DIMENSIONS HXWXD (MM)

1060,3 x 270 x 355

WEIGHT (kg/each)

24,5

Sf16

Aida

Lilium

Il Cremonese

Homage
tradition

Sonus faber
Olympica
collection

Venere
collection

Chameleon
collection

B
T
Center

Principia
collection

Sonus faber



Sf16

Aida

Lilium

Il Cremonese

Homage
tradition

Sonus faber
Olympica
collection

Venere
collection

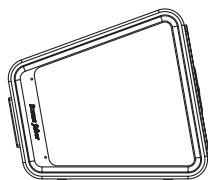
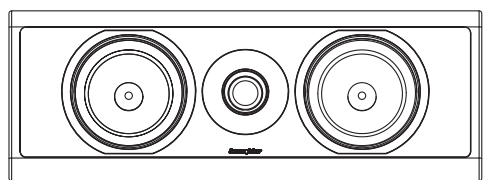
Chameleon
collection

B
T
Center

Principia
collection

Sonus faber

Sonus faber
Chameleon C.



TECHNICAL SPECIFICATIONS

LOUDSPEAKER SYSTEM

2 way closed box with passive radiator

TWEETER

29 mm high definition precoated fabric dome driver with no ferrofluid. Sonus faber design.

MIDWOOFER

1x150 mm. Free compression basket design and PP cone. Ultra dynamic performance and linearity. Sonus faber design.

PASSIVE RADIATOR

1x150 mm. Free compression basket design and PP cone. Sonus faber design.

CROSS-OVER POINTS

2.000 Hz

FREQUENCY RESPONSE

50 Hz – 25.000 Hz

SENSITIVITY (2.83V/1m)

87 dB SPL

NOMINAL IMPEDANCE

4 Ohm

SUGGESTED AMPLIFIER POWER OUTPUT

30W – 150W
without clipping

LONG-TERM MAX INPUT VOLTAGE (IEC-268-5)

20V rms

TOTAL DIMENSIONS HXWxD (MM)

199 x 540 x 228

WEIGHT (kg/each)

8,1

Sf16

Aida

Lilium

Il Cremonese

Homage
tradition

Sonus faber
Olympica
collection

Venere
collection

Chameleon
collection

B
T
Center

Principia
collection

Sonus faber



Sonus faber

Principia
COLLECTION

Sf16

Aida

Lilium

Il Cremonese

Homage
tradition

Sonus faber
Olympica
collection

Venere
collection

Chameleon
collection

Principia
collection

1
3
5
7
Center

Sonus faber

Sf16

Aida

Lilium

Il Cremonese

Homage
tradition

Sonus faber
Olympica
collection

Venere
collection

Chameleon
collection

Principia
collection

1
3
5
7
Center

Sonus faber





Sf16

Aida

Lilium

Il Cremonese

Homage
tradition

Sonus faber
Olympica
collection

Venere
collection

Chameleon
collection

Principia
collection

1
3
5
7
Center

Sonus faber



Sf16

Aida

Lilium

Il Cremonese

Homage
tradition

Sonus faber
Olympica
collection

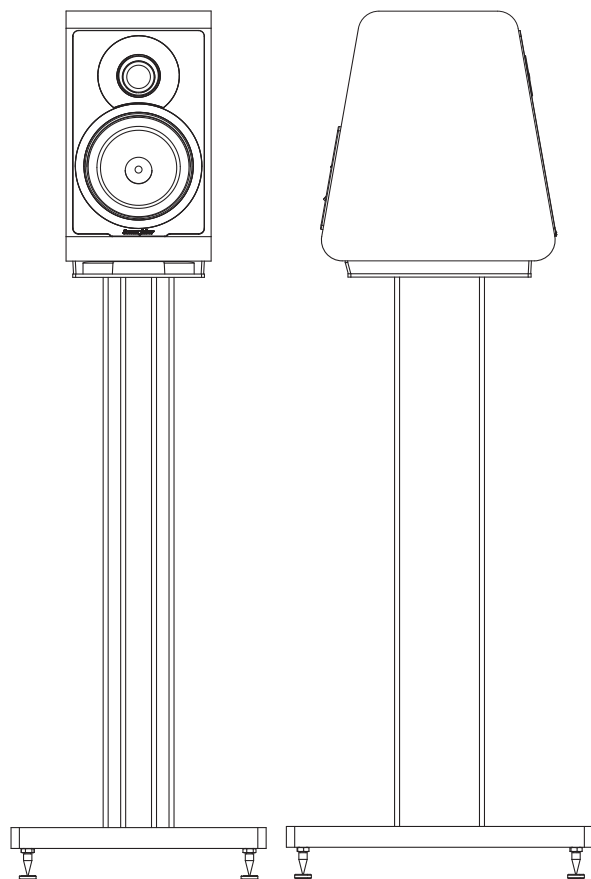
Venere
collection

Chameleon
collection

Principia
collection

1
3
5
7
Center

Sonus faber



TECHNICAL SPECIFICATIONS

LOUDSPEAKER SYSTEM

2 way standmount bookshelf vented box

TWEETER

29 mm high definition precoated fabric dome driver.
Sonus faber design.

MID-WOOFERS

1x150 mm. Free compression basket design and PP cone. Ultra dynamic performance and linearity.
Sonus Faber design.

CROSS-OVER POINTS

2.500 Hz

FREQUENCY RESPONSE

50 Hz – 25.000 Hz

SENSITIVITY (2.83V/1m)

87 dB SPL

NOMINAL IMPEDANCE

4 Ohm

SUGGESTED AMPLIFIER POWER OUTPUT

30W – 150W without clipping

LONG-TERM MAX INPUT VOLTAGE (IEC-268-5)

20V rms

DIMENSIONS HXWXD (MM)

320 x 175 x 280

OPTIONAL DEDICATED STAND HXWXD (MM)

725 x 306 x 370

WEIGHT (kg/each)

5

Sf16

Aida

Lilium

Il Cremonese

Homage
tradition

Sonus faber
Olympica
collection

Venere
collection

Chameleon
collection

Principia
collection

1
3
5
7
Center

Sonus faber



Sf16

Aida

Lilium

Il Cremonese

Homage
tradition

Sonus faber
Olympica
collection

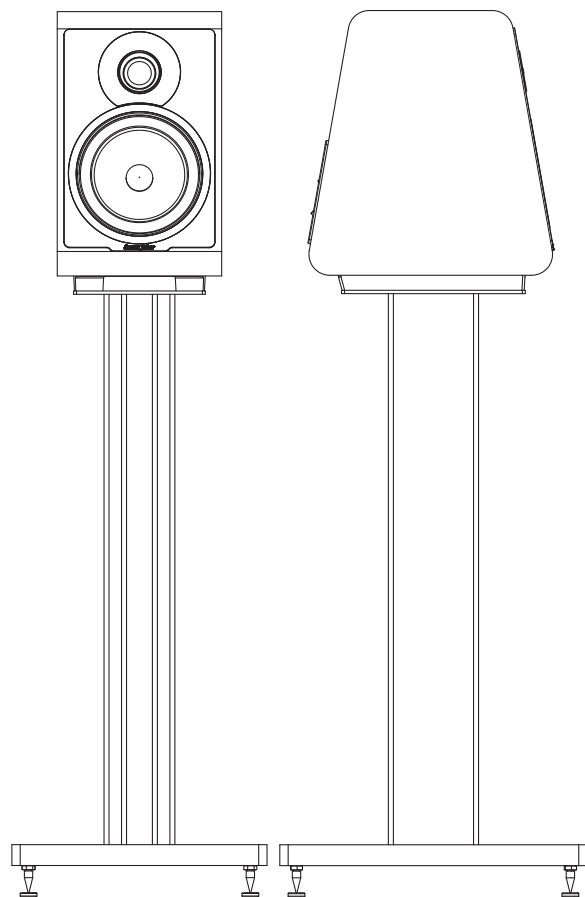
Venere
collection

Chameleon
collection

Principia
collection

1
3
5
7
Center

Sonus faber



TECHNICAL SPECIFICATIONS

LOUDSPEAKER SYSTEM

2 way standmount bookshelf vented box

TWEETER

29 mm high definition precoated fabric dome driver.
Sonus faber design.

MID-WOOFERS

1x180 mm. Free compression basket design and PP cone. Ultra dynamic performance and linearity.
Sonus Faber design.

CROSS-OVER POINTS

2.500 Hz

FREQUENCY RESPONSE

45 Hz – 25.000 Hz

SENSITIVITY (2.83V/1m)

88 dB SPL

NOMINAL IMPEDANCE

4 Ohm

SUGGESTED AMPLIFIER POWER OUTPUT

50W – 200W without clipping

LONG-TERM MAX INPUT VOLTAGE (IEC-268-5)

20V rms

DIMENSIONS HXWXD (MM)

335 x 197 x 292

OPTIONAL DEDICATED STAND HXWXD (MM)

725 x 306 x 370

WEIGHT (kg/each)

6,1

Sf16

Aida

Lilium

Il Cremonese

Homage
tradition

Sonus faber
Olympica
collection

Venere
collection

Chameleon
collection

Principia
collection

1
3
5
7
Center

Sonus faber



Sf16

Aida

Lilium

Il Cremonese

Homage
tradition

Sonus faber
Olympica
collection

Venere
collection

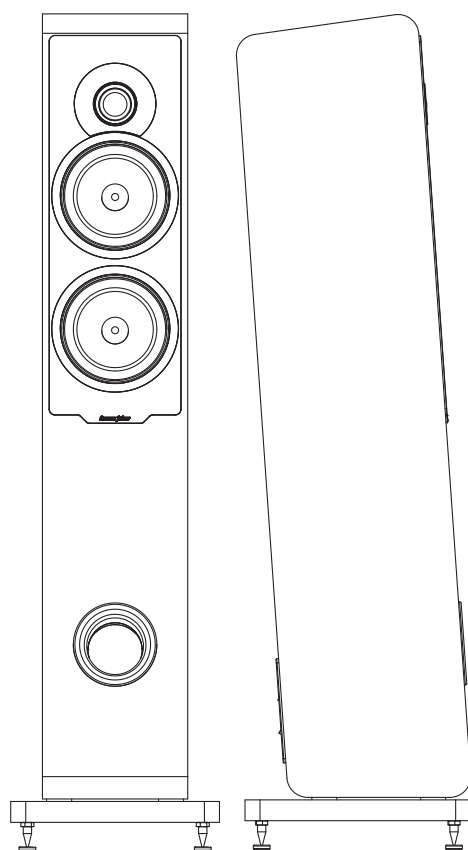
Chameleon
collection

Principia
collection

1
3
5
7
Center

Sonus faber

Principia 5
Sonus faber



TECHNICAL SPECIFICATIONS

LOUDSPEAKER SYSTEM

2 way floorstanding vented box

TWEETER

29 mm high definition precoated fabric dome driver.
Sonus faber design.

MID-WOOFERS

2x150 mm. Free compression basket design and PP cone. Ultra dynamic performance and linearity.
Sonus Faber design.

CROSS-OVER POINTS

2.500 Hz

FREQUENCY RESPONSE

40 Hz – 25.000 Hz

SENSITIVITY (2.83V/1m)

90 dB SPL

NOMINAL IMPEDANCE

4 Ohm

SUGGESTED AMPLIFIER POWER OUTPUT

40W – 250W without clipping

LONG-TERM MAX INPUT VOLTAGE (IEC-268-5)

22V rms

DIMENSIONS HXWXD (MM)

1000 x 250 x 280

WEIGHT (kg/each)

13,2

Sf16

Aida

Lilium

Il Cremonese

Homage
tradition

Sonus faber
Olympica
collection

Venere
collection

Chameleon
collection

Principia
collection

1
3
5
7
Center

Sonus faber



Sf16

Aida

Lilium

Il Cremonese

Homage
tradition

Sonus faber
Olympica
collection

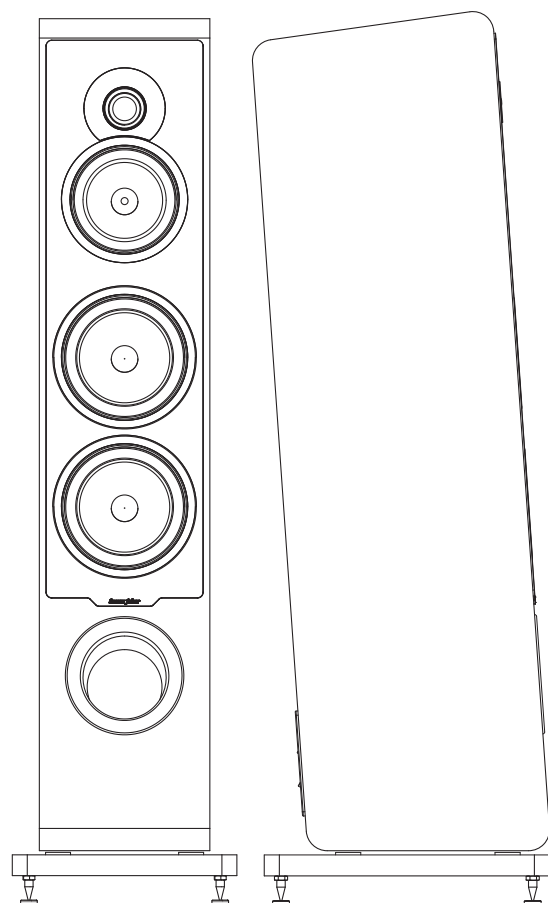
Venere
collection

Chameleon
collection

Principia
collection

1
3
5
7
Center

Sonus faber



TECHNICAL SPECIFICATIONS

LOUDSPEAKER SYSTEM

3 way floorstanding vented box

TWEETER

29 mm high definition precoated fabric dome driver.
Sonus faber design.

MIDRANGE

1x150 mm. Free compression basket design and thermo-mouldered polypropylene cone (PP).
Ultra dynamic performance and linearity.
Sonus Faber design.

WOOFER

2x180 mm. Free compression basket design and PP cone. Ultra dynamic performance and linearity.
Sonus Faber design.

CROSS-OVER POINTS

250 Hz - 2.500 Hz

FREQUENCY RESPONSE

38 Hz – 25.000 Hz

SENSITIVITY (2.83V/1m)

90 dB SPL

NOMINAL IMPEDANCE

4 Ohm

SUGGESTED AMPLIFIER POWER OUTPUT

40W – 300W
without clipping

LONG-TERM MAX INPUT VOLTAGE (IEC-268-5)

22V rms

TOTAL DIMENSIONS HXWXD (MM)

1060 x 270 x 355

WEIGHT (kg/each)

18,9

Sf16

Aida

Lilium

Il Cremonese

Homage
tradition

Sonus faber
Olympica
collection

Venere
collection

Chameleon
collection

Principia
collection

1
3
5
7
Center

Sonus faber



Sf16

Aida

Lilium

Il Cremonese

Homage
tradition

Sonus faber
Olympica
collection

Venere
collection

Chameleon
collection

Principia
collection

1
3
5
7
Center

Sonus faber



TECHNICAL SPECIFICATIONS

LOUDSPEAKER SYSTEM

2 way closed box with passive radiator.

TWEETER

29 mm high definition precoated fabric dome driver.
Sonus faber design.

MIDWOOFER

1x150 mm. Free compression basket design and PP cone. Ultra dynamic performance and linearity. Sonus Faber design.

PASSIVE RADIATOR

1x150 mm. Free compression basket design and PP cone.
Sonus Faber design.

CROSS-OVER POINTS

2.000 Hz

FREQUENCY RESPONSE

50 Hz – 25.000 Hz

SENSITIVITY (2.83V/1m)

87 dB SPL

NOMINAL IMPEDANCE

4 Ohm

SUGGESTED AMPLIFIER POWER OUTPUT

30W – 150W
without clipping

LONG-TERM MAX INPUT VOLTAGE (IEC-268-5)

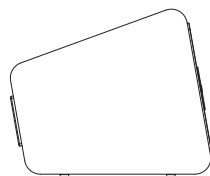
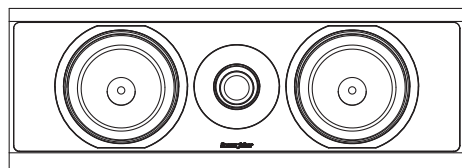
20V rms

TOTAL DIMENSIONS HXWXD (MM)

199 x 520 x 230

WEIGHT (kg/each)

6,6



Sf16

Aida

Lilium

Il Cremonese

Homage
tradition

Sonus faber
Olympica
collection

Venere
collection

Chameleon
collection

Principia
collection

1
3
5
7
Center

Sonus faber

Sonus faber

sonusfaber.com